



# Magnetic shuttering and formwork systems for precast concrete production

We offer a wide range of magnetic holder systems for production of prefabricated concrete elements. Magnets are available with formwork profile and integrated magnets (Formwork System) or as separate units (Magnetic holders, shuttering magnets), which can be attached to a separate wooden or steel formwork onto the casting table. We also have magnetic holders for attach the lifting and fixing anchors, as well as various electrical boxes to steel formwork and to forming of chamfers and grooves to concrete elements. Formwork systems are delivered for operating either manually or formwork robot.



FORMWORK SYSTEM HM13

## MAGNETIC HOLDERS HM1 AND HM2

**Shuttering magnets with release lever**  
Traditional basic shuttering magnets.

## MAGNETIC HOLDER HM13

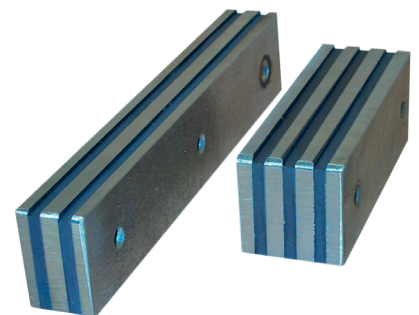
**Shuttering magnets with reliable push button**  
Fast and reliable fixing onto the casting table. Available variations for wooden and steel formworks.

## MAGNETIC HOLDER HM18

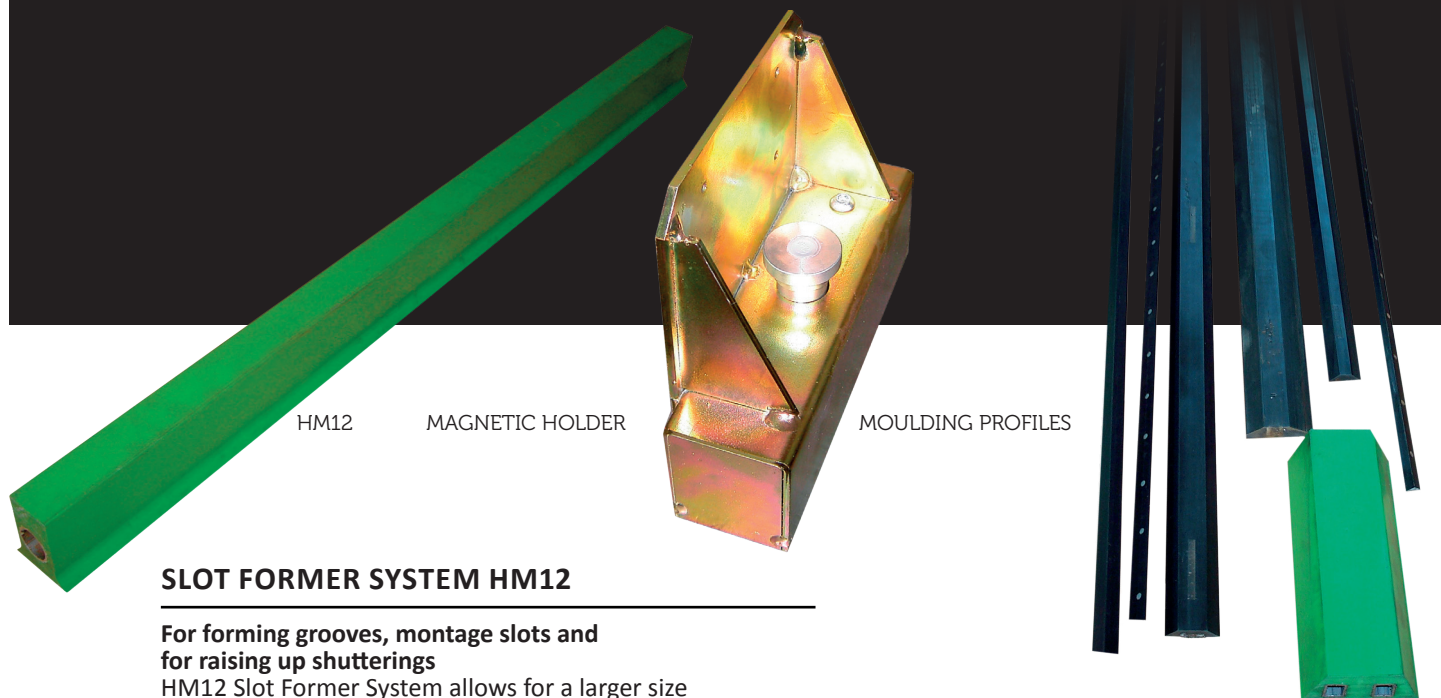
**The lightweight shuttering magnet**  
Very lightweight and compact magnetic holder without sharp edges due to plastic body. The HM18-Magnetic Holders is especially well suited for securing both wooden and metal formwork while making concrete elements.

## FORMWORK SYSTEM HM3

**HM3 magnetic holders and U-profiles**  
For ceiling plates- and double wall production.



FORMWORK SYSTEM HM3



HM12

MAGNETIC HOLDER

MOULDING PROFILES

## SLOT FORMER SYSTEM HM12

**For forming grooves, montage slots and for raising up shutterings**

HM12 Slot Former System allows for a larger size the grooves to manufacture compared to Moulding Profiles

## FORMWORK SYSTEM HM13

**Formwork system with a steel profile and inbuilt attaching system**

This HM13 formwork system can be obtained for various different solutions such as the casting of filigran, sandwich, façade, column and slab concrete elements.

The formwork can be constructed for continuous production or for situations demanding flexibility with frequently changing element sizes. The fixing mechanism can be made to work manually or operated by robot.

The HM13 formwork system is comprised of a steel profile and an inbuilt magnetic attaching mechanism that is suitable for fixing to most bases.

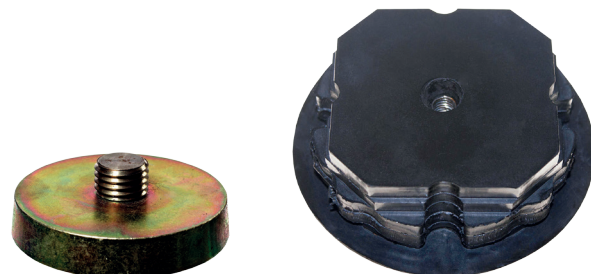
## MAGNETIC HOLDERS HM4, HM5 AND HM9

**For fastening the anchors to formwork**

We have a wide range of magnetic holders for threaded socket anchors, spherical anchors, spread anchors and other anchor systems.

## MOULDING PROFILES

These profiled strips are designed for forming grooves and chamfers of varying shapes and sizes into concrete elements. They are available in steel, plastic and rubber and can be obtained either with or without integrated magnets.



MAGNETIC HOLDER HM4

ELECTRICAL BOX MAGNET

FORMWORK SYSTEM HM13

