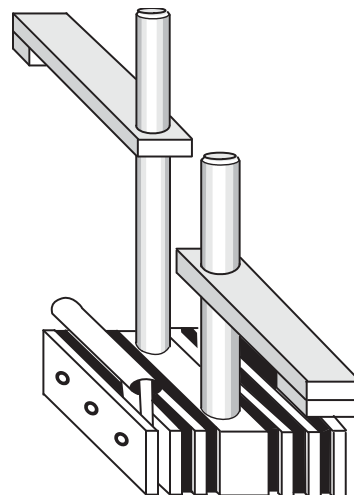


BGW-magnetic holder type HM1

This magnetic holder system is by mean of it's steplessly adjustable downholder especially suitable for the use with often changing formwork height.

The arm is approximately 360° around the column moveable.

Three sides of our magnetic holders are flat and without screws jutting out, so that they can be used as stoppers against side-moving of the formwork. The structure of the magnet body adjusts unevenness of the formwork without loss of adhesion.



BGW-Magnetic holder Typ HM1

art.-no.	holding down device	adhesi on ca. kp	shifting power	weight ca. kg	width mm	length mm	fixing height mm	price €/piece
HM1- 600-1A	1 x with welded on plate	600	200	8	102	250	ca. 300	123,00
HM1- 600-1G	1 x with thread	600	200	8	102	250	ca. 300	123,00
HM1- 600-2A	2 x with welded on plate	600	200	8	102	250	ca. 300	135,00
HM1- 600-2G	2 x with thread	600	200	8	102	250	ca. 300	135,00
HM1-1000-1A	1 x with welded on plate	1000	350	12	150	250	ca. 300	162,00
HM1-1000-1G	1 x with thread	1000	350	12	150	250	ca. 300	162,00
HM1-1000-2A	2 x with welded on plate	1000	350	12	150	250	ca. 300	174,00
HM1-1000-2G	2 x with thread	1000	350	12	150	250	ca. 300	174,00
HM1-1600-1A	1 x with welded on plate	1600	600	16	200	250	ca. 300	194,00
HM1-1600-1G	1 x with thread	1600	600	16	200	250	ca. 300	194,00
HM1-1600-2A	2 x with welded on plate	1600	600	16	200	250	ca. 300	207,00
HM1-1600-2G	2 x with thread	1600	600	16	200	250	ca. 300	207,00
HM1-2000-1A	1 x with welded on plate	2000	700	20	245	250	ca. 300	225,00
HM1-2000-1G	1 x with thread	2000	700	20	245	250	ca. 300	225,00
HM1-2000-2A	2 x with welded on plate	2000	700	20	245	250	ca. 300	238,00
HM1-2000-2G	2 x with thread	2000	700	20	245	250	ca. 300	238,00

special measurements, special for your production, you get on demand!

Supplies

Column 300 mm high

art.-no.	designation	price €/piece
56129/300	column Ø 25 mm, high: 300 mm, with thread M 24	5,00

other highness on demand!

Holding down device with welded on plate, inclusive column

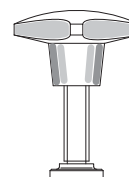
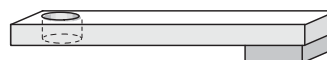
art.-no.	designation	price €/piece
NH-11	holding down device with Auflager column Ø 25 mm with thread M 24	13,00

Holding down device with thread M 16, inclusive column

art.-no.	designation	price €/piece
NH-21	holding down device with thread M 16 column Ø 25 mm with thread M 24	13,00

Spindle for pressing down the hinge, for down holder

art.-no.	designation	price €/piece
ZG-1	spindle for pressing down the hinge M 16 cross handle 80 mm, Ø plate 32 mm	15,00

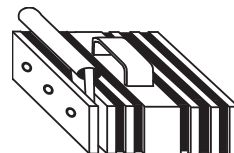


BGW- magnetic holder model HM2

This magnetic holder system is suitable to prevent a moving of the shuttering to the side. As the grab handle being situated in the middle of the magnet, an exact and easy fixing of the system is made possible.

BGW-magnetic holder HM2 – standard –

art.-no.	strength ca. kp	side- moving strength	weight ca. kg	breadth mm	length mm	height with release tool mm	height magnet mm	price €/piece
HM2- 600	600	200	6,0	92	250	120	50	98,00
HM2-1000	1000	350	10,0	140	250	120	50	136,00
HM2-1600	1600	600	14,0	190	250	120	50	169,00
HM2-2000	2000	700	18,0	235	250	120	50	202,00



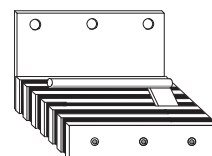
BGW-magnetic holder HM2 –release tool concentric –

art.-no.	strength ca. kp	side- moving strength	weight ca. kg	breadth mm	length mm	height with release tool mm	height magnet mm	price €/piece
HM2- 600-1	600	200	6,0	92	250	120	50	96,00
HM2-1000-1	1000	350	10,0	140	250	120	50	134,00
HM2-1600-1	1600	600	14,0	190	250	120	50	167,00
HM2-2000-1	2000	700	18,0	235	250	120	50	200,00



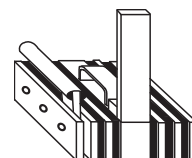
BGW-magnetic holder HM2 – plate to base on – with release tool concentric and holes for nails on demand

art.-no.	strength ca. kp	side- moving strength	weight ca. kg	breadth mm	length mm	height with release tool mm	height magnet mm	price €/piece
HM2- 600-2	600	200	6,0	92	250	120	50	111,00
HM2-1000-2	1000	350	10,0	140	250	120	50	149,00
HM2-1600-2	1600	600	14,0	190	250	120	50	182,00
HM2-2000-2	2000	700	18,0	235	250	120	50	215,00



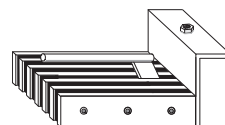
BGW-magnetic holder HM2 – welded on bracket 90°–

art.-no.	strength ca. kp	side- moving strength	weight ca. kg	breadth mm	length mm	height with release tool mm	height magnet mm	price €/piece
HM2- 600-3	600	200	6,0	92	250	120	50	111,00
HM2-1000-3	1000	350	10,0	140	250	120	50	149,00
HM2-1600-3	1600	600	14,0	190	250	120	50	182,00
HM2-2000-3	2000	700	18,0	235	250	120	50	215,00



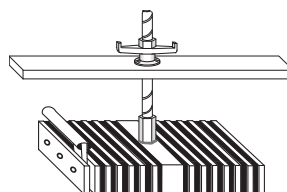
BGW-magnetic holder HM2 – frontal welded on angle – with release tool concentric and welded on female screw on demand

art.-no.	strength ca. kp	side- moving strength	weight ca. kg	breadth mm	length mm	height with release tool mm	height magnet mm	price €/piece
HM2- 600-4	600	200	6,0	92	250	120	50	111,00
HM2-1000-4	1000	350	10,0	140	250	120	50	149,00
HM2-1600-4	1600	600	14,0	190	250	120	50	182,00
HM2-2000-4	2000	700	18,0	235	250	120	50	215,00



BGW-magnetic holder HM2 – for the fixing of window and door frames –

art.-no.	performance with concentric ...	strength ca. kp	side- moving strength	weight ca. kg	breadth mm	length mm	height mm	price €/piece
HM2-2000-R	... ring-screw	2000	700	18	235	250	50	210,00
HM2-2000-D	... D&W(15)-nut	2000	700	18	235	250	50	210,00
HM2-2000-G	... thread M 20	2000	700	18	235	250	50	214,00



drop rod and
wingnut separate
available

BGW-magnetic holder model HM3

This magnetic holder system is suitable for the installation in U-profiles, which are used at the production of element-ceilings.

On demand, this magnetic holder is delivered for the installation in U-profiles with a incline of 5 x 45°, with other milled gaps or robot suitability.



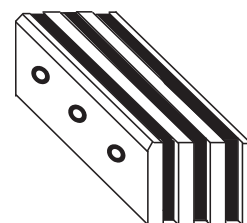
The magnetic holders are not screwed, but riveted with stainless steel flat to the surface.

So that the magnet always with the appropriate side mount and by adjust these do not damaged, only the detention side is milled.

The U-profiles matching to this magnet system, you get on demand with draft.

HM3 blank

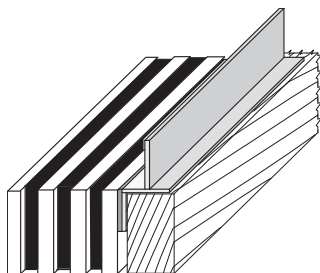
art. no. HM3-	adhesion ca. kp	shift power	weight ca. kg	width mm	length mm	height mm	price €/piece
32-140-2	200	70	1,5	32	140	50	
40-140-2	200	70	1,5	40	140	50	on
50-140-3	300	100	2,0	50	140	50	request!
54-140-3	300	100	2,0	54	140	50	
54-140-4	450	150	2,5	54	140	50	
32-250-2	350	120	3,0	32	250	50	
40-250-2	350	120	3,0	40	250	50	
50-250-3	500	190	4,0	50	250	50	
54-250-3	500	190	4,0	54	250	50	
54-250-4	650	220	4,5	54	250	50	



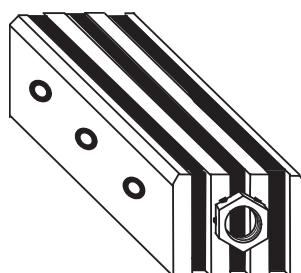
HM3 galvanized on request!

Special models:

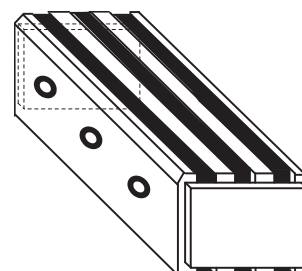
HM3 with angle for roof slats



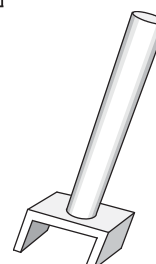
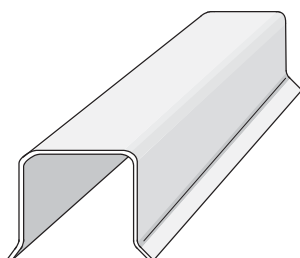
HM3 with stainless steel nuts on both sides



HM3 with stainless steel plates on gable-ends



U-profiles:



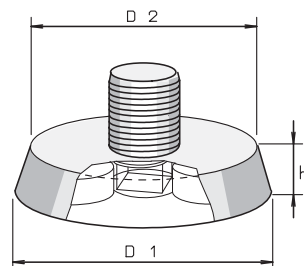
Key 44, -- €/piece

BGW-magnetic holder type HM4

The magnetic holders are special suitable to fix transport anchors with steel formworks. The used Neodymium magnets have, in contrast to other available magnetic holders which had been used in this case, a very strong adhesion even at a small room. Deviation heights respectively diameters you get on demand. **The thread-pins are changeable or welded.** The refitting of adhesion is possible.

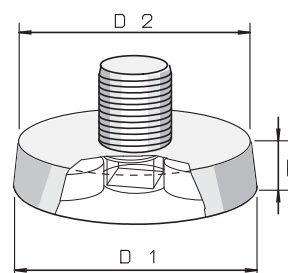
BGW-magnetic holder type HM4

art.-no.	thread pin	adhesion kp	D 1 mm	D 2 mm	height h mm	price €/piece
HM4-3	M 8 - 30	50	65	60	12	
HM4-6	M 8 - 30	100	65	60	12	
HM4-8	M 24 - 52	120	100	96	22	on request!
HM4-12	M 24 - 52	180	100	96	22	
HM4-8	M 24 - 52	120	113	101	15	
HM4-12	M 24 - 52	180	113	101	15	
HM4-F	M 8 - 24	10	52	50	11	



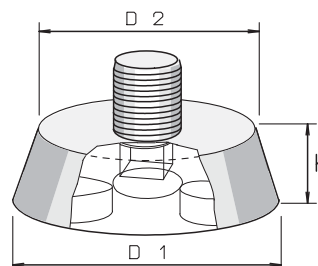
BGW-magnetic holder type HM4-P fitting to Pfeifer-system

art.-no.	thread Rd o. M	adhesion kp	D 1 mm	D 2 mm	height h mm	price €/piece
HM4-P-12	12	50	50,5	47	10	
HM4-P-14	14	50	55,5	52	10	
HM4-P-16	16	50	59,2	56	10	
HM4-P-18	18	50	62,5	59	10	
HM4-P-20	20	100	73,5	70	10	
HM4-P-24	24	100	78,2	74	12	
HM4-P-30	30	120	94,2	90	12	
HM4-P-36	36	120	105,2	101	12	
HM4-P-42	42	120	115,3	110	15	
HM4-P-52	52	120	135,3	130	15	



BGW-magnetic holder type HM4-D fitting to DEHA-perfecthead

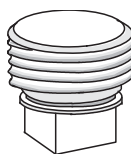
art.-no.	thread Rd o. M	adhesion kp	D 1 mm	D 2 mm	height h mm	price €/piece
HM4-D-30/10	12 - 16	50	40	30	10	
HM4-D-30/20	12 - 16	50	50	30	20	
HM4-D-45/10	18 - 24	100	55	45	10	
HM4-D-45/20	18 - 24	100	65	45	20	
HM4-D-60/10	30 - 36	120	70	60	10	
HM4-D-60/20	30 - 36	120	80	60	20	



Thread pin for HM4

At delivery, the magnet plate is supplied with a thread pin in a particular size, but it also can be used in combination with other sizes. To achieve a particular flexibility, this thread pin can be ordered independent of the magnetic plate. An easy exchange of the thread pins is made possible by a safety-ring, under which help the pin is fixed at the underside of the plate.

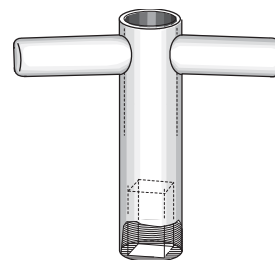
art.-no.	Ø thread mm	€/piece
56131	12	
56132	14	
56133	16	
56134	18	
56135	20	
56136	24	



Key for HM4

This is a square headed key, under which help the pin of the magnetic holder is turned into the thread of the anchor. After the concrete process, the magnet is removed out of the hard concrete by **turning left**.

art.- no.	name	€/piece
SchlüsselHM4	4 edge key	



BGW-magnetic inlays out of Ne 35

First thought as spare part for BGW- products, this article can be used diversely.

art.- no.	size mm	€/piece
54004	Ø 18,0 x 4	
54006	Ø 19,5 x 7	
54013	40 x 18 x 5	

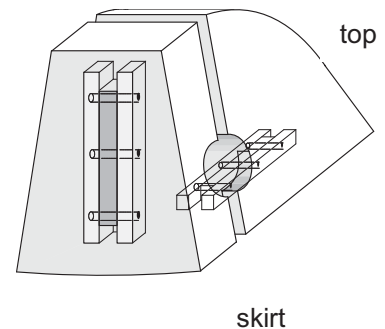


Recess-former for Cast-In Loops – magnetic

Magnetic recess-former for fixing cast-in loops or transport frames at concrete-shaft-production

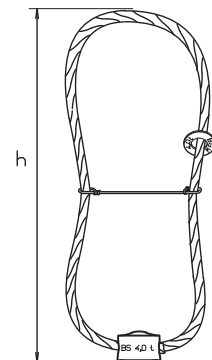
Recess-former for cast-in loops

art.-nr.	title	€/piece
Recess-former for cast-in loops	Recess-former 2-piece	



Wire cable concrete loop consist of wire rope, galvanized

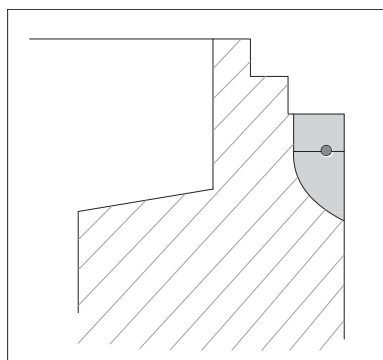
art.-nr.	load t	rope Ø	€/piece
4508	2,5 t	10 mm	
4510	4,0 t	12 mm	



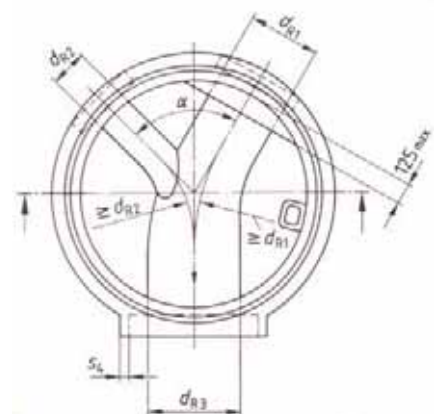
Fixing instruction:

1. Form work and recess former spraying with releasing agent
2. Put skirt of recess former (small, square) with magnet on sleeve side resp. on the bottom of shaft
3. insert rope or transport frame allocated recess and fixing on reinforcement
4. Put 2. half of recess former (round) on 1. half with magnet on form work so that transitions are slick
5. After concreting and curing pull the shaft and remove the recess former

Per sleeve install 3 recess former (scale of shaft skirt divide into three) resp. detect emphasis



Example in shaft skirt DIN 1

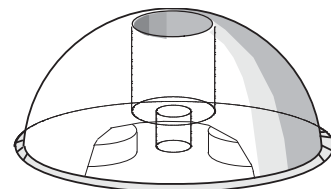


BGW-magnetic holder type HM5 - HM8 - HM9

BGW-magnetic holder type HM5

This magnetic holder is special suitable to fix capstan lifters with steel formworks. The used Neodymmagnets have, in contrast to other available magnetic holders which had been used in this case, a very strong adhesion even at a small room. The refitting of adhesion is possible.

art.-no.	anchor capacity t	adhesion kp	Ø outside	concrete cover mm	price €/piece
HM5-3	1 - 1,3	50	60	10	
HM5-3	2 - 2,5	50	74	11	
HM5-6	2 - 2,5	100	74	11	
HM5-3	3 - 5,0	50	94	15	on request!
HM5-6	3 - 5,0	100	94	15	
HM5-8	3 - 5,0	120	94	15	
HM5-12	3 - 5,0	180	94	15	
HM5-3	6 - 10,0	50	118	15	
HM5-6	6 - 10,0	100	118	15	
HM5-8	6 - 10,0	120	118	15	
HM5-12	6 - 10,0	180	118	15	



BGW-rubber sleeve for magnetic holder type HM5

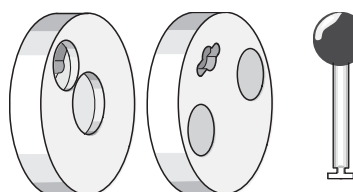
art.-no.	for load	€/piece
1670	1,0 – 1,3 t	
1672	2,0 – 2,5 t	
1674	4,0 – 5,0 t	on request!
1676	7,5 t	
1678	8,0 – 10 t	
1680	15 t	
1682	20 t	



BGW-magnetic holder type HM8

This magnetic holder system is special suitable for fixing so called Spelzberg boxes to steel formwork. Despite of the small size and surface, this magnet gets enormous adhesion. The form of the magnet is special matched to the „Spelzberg box“ and prevents so a slipping of the box. Using the key, which is inserted into the therefore existing gap, the magnet can be pulled off the box easily.

art.-no.	magnets	Ø outside	price €/piece
HM8-2	2	50	
HM8-3	3	50	

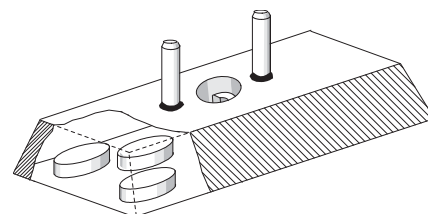


Key for magnetic holder HM8

BGW-magnetic holder model HM9

This BGW-magnetic holder serves for fixing of spread-anchors (e.g. *Frimeda* spread anchors) with steel formwork. The magnet-plates are milled conical, to make easier the de-installation, which works with the help of an extra key. Deviation heights respectively diameters you get on demand.

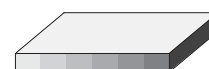
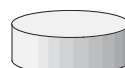
art.-no.	load t	adhesion kp	size outside mm	concrete cover	price €/piece
HM9-6	2,5	100	144 x 64	12 mm	
HM9-12	2,5	180	144 x 64	12 mm	
HM9-6	5,0	100	144 x 64	12 mm	
HM9-12	5,0	180	144 x 64	12 mm	
HM9-6-10,0	10,0	100	210 x 95	15 mm	
HM9-10-10,0	10,0	170	210 x 95	15 mm	
HM9-16-26,0	26,0	270	370 x 140	15 mm	



BGW-magnetic inlays out of Ne 35

First thought as spare part for BGW- products, this article can be used diversely.

art.- no.	size mm	€/piece
54004	Ø 18,0 x 4	
54006	Ø 19,5 x 7	
54013	40 x 18 x 5	



BGW-magnetic holder model HM10

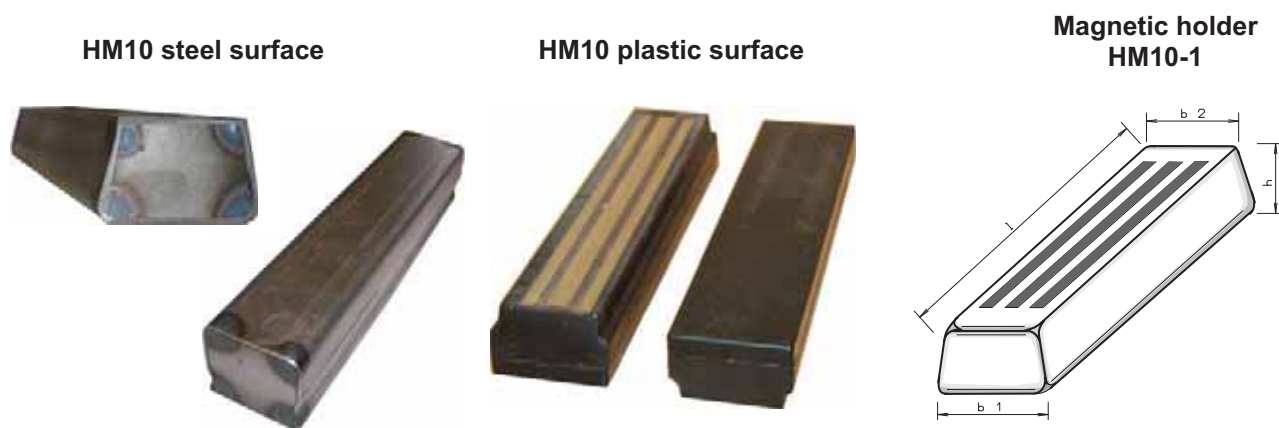
The *BGW*-magnetic holder is for fastening steel formwork during the concrete process. It's rubber body fixes the shuttering against floating. It is a development of the already available sandwich- or slat-magnets.

The separated magnetic elements are poured in synthetics, which saves the system against blows, which could lead to a loose of magnetism. The plastic gives the magnet a extreme low weight, what has a favourable effect on handling and work safety. Moreover, using this construction, the adhesion of the magnet could be raised enormously.

By mean of it's flat surface, it has very good cleaning qualities with nylon brushes.

The model **HM10-2** has a inscription area, which can be sign, on the customer's demand with his company's logo.

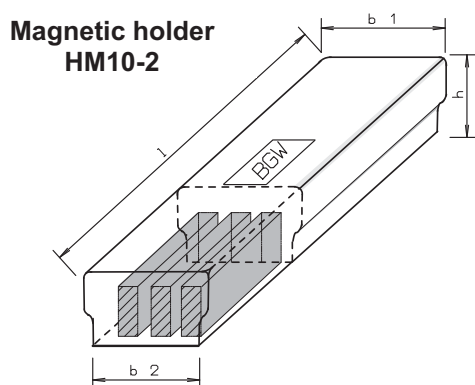
It is possible to change and to design the form, the dimensions and the adhesion as required.



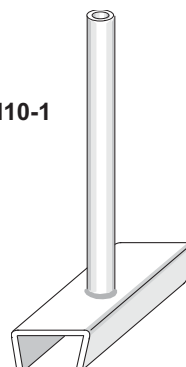
art.-no. magnetic holder	adhesion kp	weight ca. kg	width mm		length l mm	height h mm	price €/piece
HM10-1-50	600	1,5	50	40	250	35	
HM10-1-55	600	1,5	55	44	250	35	
HM10-2-50	600	1,5	50	40	243	35	
HM10-2-55	600	1,5	55	44	243	35	

art.-no. lever	for magnetic holder	price €/piece
HM10-1 Hebel50	HM10-1-50	
HM10-1 Hebel55	HM10-1-55	
HM10-2 Hebel50	HM10-2-50	
HM10-2 Hebel55	HM10-2-55	

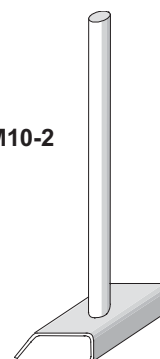
Attention:
It is only allowed to take off the magnets HM10 with the fitting *BGW*-levers.
We can't take any guarantee by damage with other levers!



lever for HM10-1



lever for HM10-2

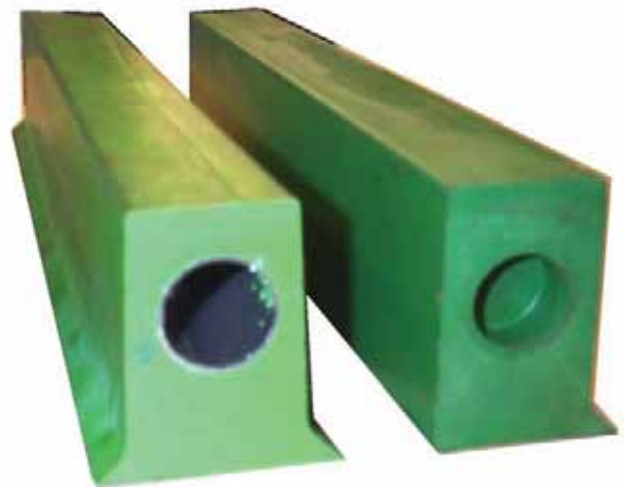


BGW-formwork-system Typ HM12

This formwork-system is specially created for wall- and ceiling-manufacturing. It consists out of plastic material (Polyurethan). In the bottom, magnets are inserted. Depending on size and length, tubes are inserted which helps to reduce weight and improves stability and also handling of especially long profiles. Moreover, the light weight and absence of sharp metal edges make the work safer. The used plastic material PU has very little weight and a very smooth surface. It doesn't pour during concrete casting procedure.

Vantages:

- **Magnetic**
- **very light weight (about 3,5 kg/meter)**
- **easy handling**
- **high working safety**
- **no danger through sharp metal edges**
- **low-maintenance – no moving parts**
- **smooth surface, low adherence**
- **stiff of torsion – 100% straight**
- **space saving storage**



BGW-formwork-system Typ HM12 height 70 mm

art.-no.	length mm	chamfer 10x45°	weight ca. kg	price €/piece
	500	without	1,75	on request
	500	One side	1,75	
	500	Two sides	1,75	
	1000	without	3,50	
	1000	One side	3,50	
	1000	Two sides	3,50	
	1500	without	5,25	
	1500	One side	5,25	
	1500	Two sides	5,25	
	2000	without	7,00	
	2000	One side	7,00	
	2000	Two sides	7,00	
	2500	without	8,75	
	2500	One side	8,75	
	2500	Two sides	8,75	
	3000	without	10,50	
	3000	One side	10,50	
	3000	Two sides	10,50	
	3500	without	12,25	
	3500	One side	12,25	
	3500	Two sides	12,25	
	4000	without	14,00	
	4000	One side	14,00	
	4000	Two sides	14,00	

standard height: 70, 80, 90 100, 150mm
standard width: 25, 40, 60mm
(with or without chamfer)

adhesive force: 300 kg / m
distribute of the whole length
If desire also with more adhesive force



h 90mm
b 40mm



h 70 or 80 mm
b (above) 15 mm
z.B. along division by ceiling production



h 70mm
b 60mm
here: with special push on steel profile

BGW-formwork-system Typ HM12 – supplies

BGW-Extension profile with integrated magnetic elements

The extension profile can be attached on the normal HM12 System to vary the length.
The U-profile is made out of high-graded steel and has a magnetic element fixed inside.
Thus can be put on the end or the middle of the profile, according to customers needs.

art.-no.	for HM12 profile		length mm	price € / piece
	height mm	width		
HM12-2-82-27-2	60	25	1000	on request
HM12-2-92-27-2	70	25	1000	
HM12-2-102-27-2	80	25	1000	
HM12-2-112-27-2	90	25	1000	
HM12-2-72-44-2	70	40	1000	
HM12-2-82-42-2	80	40	1000	
HM12-2-92-42-2	90	40	1000	
HM12-2-72-62-2	70	60	1000	
HM12-2-82-62-2	80	60	1000	
HM12-2-92-62-2	90	60	1000	

On order: please give the position for the magnetic elements (middle or end)
Other dimensions on request



BGW-Push-On Profile (i.ex. for the production of floors)

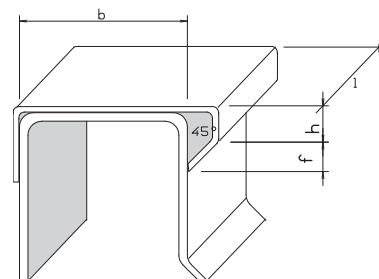
This steel-profile can be pushed onto an existing Steel U-profiles or the HM 12 formwork system.

The shape of the profile warrants a concrete cover according DIN 1045-1 (i.ex. on an element ceiling production).

The profile will be delivered by dimension according for the existing formwork-system important: please indicate the basic profile).

Furthermore the BGW-Push-On Profile can deliver with integrated apertures to screw tight on form.

Material: ST 52; length (l) up to 4000 mm



art.-no.	B mm	H mm	F mm	price € / m
	25	10	10	on request
	25	10	15	
	40	10	10	
	40	10	15	
	60	10	10	
	60	10	15	

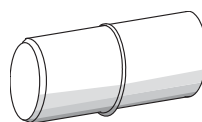
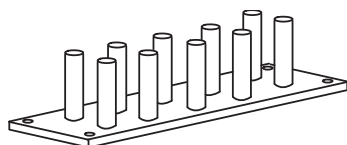


BGW-formwork-system Typ HM12 – supplies

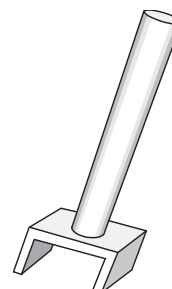
different solutions which facilitates the work with the formwork-system HM12:

Store appliance:

i.ex. for 10 or 20 profiles



connecting bolt



Lever for HM12

44,00 €/piece

art.- no.	article	annotation	price €/ piece
	Store appliance	10 pieces	
	Store appliance	20 pieces	
	Store appliance	30 pieces	
	Lever	width 25 mm	
	Lever	width 40 mm	
	Lever	width 60 mm	
	connecting bolt	for width 40 + 60 mm	

HM12 additional profiles and magnets

For retrofit existing or for creating special length

art.-no.	article	annotation	price €/ piece
540322	magnetic elements	Ø 32 x 7 mm	on request
Lochfräse	Milling tool	appropriate to mag- netic elements	
56940	Spezial screw	6,3 x 50 self drilling	
HM12-P-60-40	Profil 40 x 70	length 1m	
HM12-P-70-40	Profil 40 x 80	length 1m	
HM12-P-80-40	Profil 40 x 90	length 1m	
HM12-P-70-60	Profil 60 x 70	length 1m	
HM12-P-80-60	Profil 60 x 80	length 1m	
HM12-P-90-60	Profil 60 x 90	length 1m	



BGW-slot-former-system HM12

This magnetic system is constructed especially for forming grooves, e.g. montage slots, and for raising up shutterings. The profile consists out of a polyurethan body with magnetic inserts at its bottom. Depending on the length, a hollow body material is pured in. So the weight can be hold low, and the stability is better. This makes the handling of even big profiles extremely easy and increases the reliability. The used plastic polyurethan has several advantages: e.g. it does not swell during the concrete process (like wooden shutterings) and so it can be easily removed.

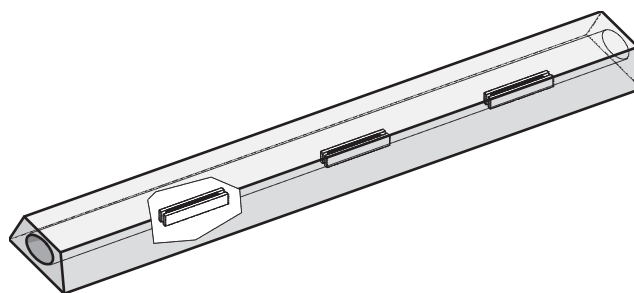
According to its construction, the BGW-slot former system HM12 can be handled easily, and is extremely resistant against wear and tear. It is recommended to spray new items twice to prevent that concrete sticks at the former. Positionate the former profile at the right place and concrete it. After removing the former, positionate the former and spray former and the whole shuttering again, and so on.

By mean of the special production process, an individual adjustment of the shape according to your individual production is easily possible. According to the field of application (horizontal or vertical), the necessary magnetic adhesion strength can be installed.

The slot- former- profile can be sawed according to the needed length. Doing this, the position of the magnetic inserts it has to be payed attention to, so that the functionality of the items will be not reduced.

BGW-Slot-former system HM12

underside mm	top side mm	height h mm	price € / m
30	10	10	on request
40	25	25	
40	35	25	
50	40	30	
60	40	40	
70	40	25	
75	30	40	
80	50	40	
80	75	30	
90	60	35	
90	70	50	
120	70	40	
120	90	50	
130	80	40	
160	130	50	



BGW-formwork system HM13

- on customer request we dense all welds and all impacts with acrylic / silicone
- also galvanized available

Different profiles – Produktion on customer concern



BGW-formwork-system HM13 *The comfortable solution*

The integrated Magnet-system

This formwork-system, consist of a formwork-profile with integrated magnetic tension-mechanism, which can be used in different formwork` s. It is specially suitable for the production of filigran- respectively double walls and lattice girder ceilings.

Advantages of the HM13-system on one view:

- **very leight weight**
- simple and safe handling
- simple servicing due to open system
- magnetic power of 900 kg, depending on Ground Surface (steel, thickness, temperatur, ruffness)
- changing the formwork just by removing three screws
- materials (steel and polyurethane) resistant against concrete
- easy to clean
- the springs pull the formwork down to the table and prevent the penetration of concrete (with 120 kg per magnet unit)
- spring elements help to unlock the magnets when demoulding
- non-magnetic handling knop enables to stack up the profiles



BGW-formwork-system HM13 *The comfortable solution*

This formwork-system, consist of a formwork-profile with integrated magnetic tension-mechanism, which can be used in different formwork` s. It is specially suitable for the production of filigran- respectively double walls and lattice girder ceilings.

By mean of the tension-mechanism, the profile (layer is planed) is pulled to the bottom of the shuttering, so that an exactly edge of the manufactured item is managed. For the system is one unit, measuring mistakes are not possible. The easy and quick handling increases the work safety. Using the corresponding lever, the system can be taken off and removed easily from the bottom of the shuttering.

By mean of the separated arrangement of tension mechanism and handle-knob, and tension mechanism and shuttering, the forces acting on the formwork and on the magnet during the concrete process are absorbed.

The built-in tension elements are placed in a save position, so that the formwork-system is less sensitive against soiling.

Note: Recess profiles before first using into oil!

To make possible a stacking up, and to prevent that the formwork stick to each other, the knob is made out of antimagnetic material. The system can also be delivered storeroom- and robot capable.

With defect the old shuttering, by remove from 3 screws, can be easily exchanged.

Declining shapes and dimensions on demand.

BGW-formwork system HM13

art.-no.	length mm	height mm	magnets	chamfers 10x45°	weight ca. kg	price €/piece
3200	500	70	1	one side	3,35	
3205	500	70	1	both sides	3,35	
3210	1000	70	2	one side	6,70	
3215	1000	70	2	both sides	6,70	
3220	1500	70	2	one side	9,05	
3225	1500	70	2	both sides	9,05	
3230	2000	70	2	one side	11,40	
3235	2000	70	2	both sides	11,40	
3240	2500	70	2	one side	13,75	
3245	2500	70	2	both sides	13,75	
3250	3000	70	2	one side	16,10	
3255	3000	70	2	both sides	16,10	
3260	3500	70	2	one side	18,45	
3265	3500	70	2	both sides	18,45	
3270	4000	70	2	one side	20,80	
3275	4000	70	2	both sides	20,80	
3280	4000	70	3	one side	21,80	
3285	4000	70	3	both sides	21,80	



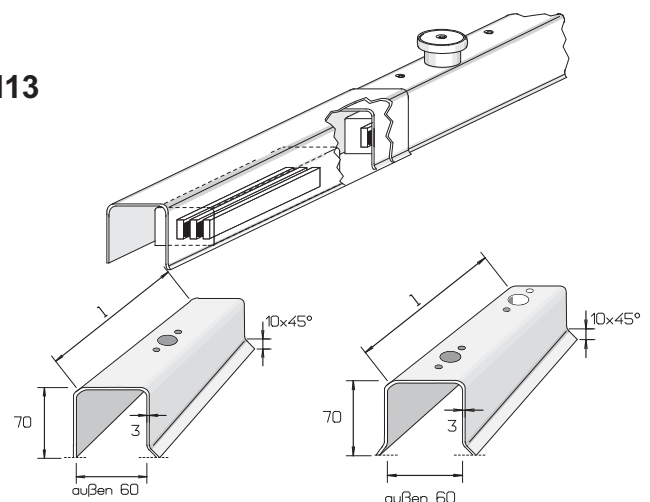
profile for length balancing, matching to HM13

metal strength 2 mm, length 1.000 mm

name	€/piece
profile with magnet	
profile without magnet	

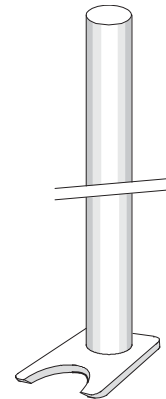
U-profiles – layer is planed

weight	chamfers 10x45°	€/mtr.
4,70 kg/m	one side	
4,70 kg/m	both sides	



BGW-formwork-system HM13 Supply

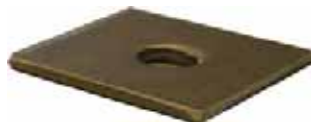
art.-no.	name	€/piece
3350	magnetic holder HM13 200x54x34	
3360	lever	
3365	handle-knob – antimagnetic (consists of head, socket and pressure disc)	
56291	screw M 8 x 60 - galvanised	
56345	screw M 8 x 60 – stainless steel	
3376	tension element – steel spring	
3384	hoist limiting	
56290	fixing screw M 8	
56283	thread tack M 8 x 10	
3306	fixing gadget for 1 magnet HM13	
3304	gadget for storeroom handling, both sides	
3302	milling for transverse profile, both sides	
3300	drilling for robot handling (2 each profile)	
56421	stuff GPN 300 V 112 – Rd/M 16 colourless	



handle-knob



pressure disc



stuff



handle-knob completely



spacer sleeve



screw



fixing screw



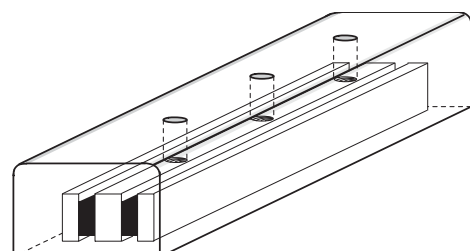
fixing screw with steel spring with thread tack



steel spring



hm13

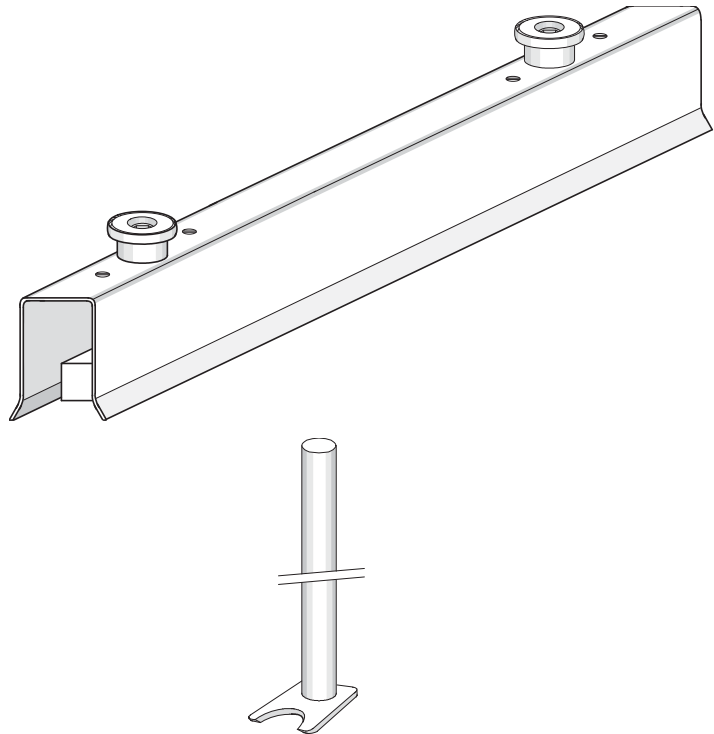


BGW-formwork system type HM13 – special heights

All formwork systems are available without chamfers, with one side or both sides chamfers. Other lengthening and heights measurements, particularly for your production requirements, you receive on request.

BGW-formwork system HM13 – special heights

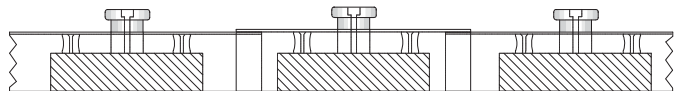
length mm	magnets	height mm	price €/piece
500	1	85	price on request
1000	2		
1500	2		
2000	2		
2500	2		
3000	2		
3500	2		
4000	2		
4000	3		
500	1	100	
1000	2		
1500	2		
2000	2		
2500	2		
3000	2		
3500	2		
4000	2		
4000	3		
500	1	150	
1000	2		
1500	2		
2000	2		
2500	2		
3000	2		
3500	2		
4000	2		
4000	3		
500	1	200	
1000	2		
1500	2		
2000	2		
2500	2		
3000	2		
3500	2		
4000	2		
4000	3		



profile for length balancing, matching to HM13

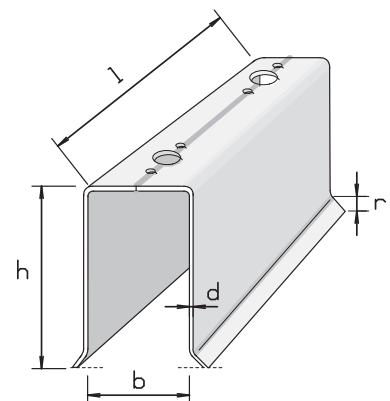
metal strength 2 mm, length 1.000 mm

height mm	name	price €/piece
85	profile with magnet	
	profile without magnet	
100	profile with magnet	
	profile without magnet	
150	profile with magnet	
	profile without magnet	
200	profile with magnet	
	profile without magnet	



U-profile, layer is planed

art.- no.	chamfers	height mm	price €/piece
	one side	85	
	both sides		
	one side	100	
	both sides		
	one side	150	
	both sides		
	one side	200	
	both sides		
3306	fixing gadget for 1 magnet HM13		
3304	gadget for storeroom handling, both sides		
3302	milling for transverse profile, both sides		
3300	drilling for robot handling (2 each profile)		
3360	lever		



BGW-Formwork system type HM13 - *length balancing 2*

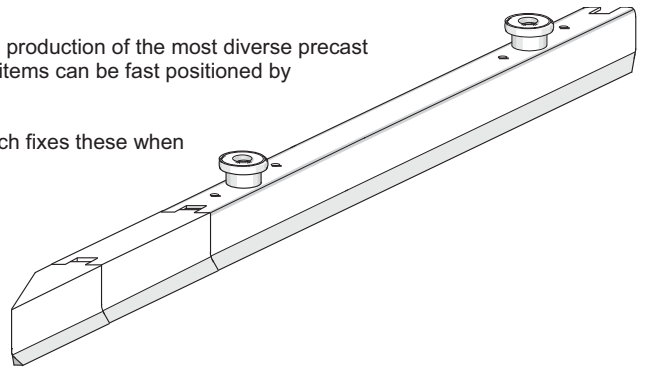
for ceiling plates- and double wall production

This formwork system is applicable by its various variation options for the production of the most diverse precast concrete parts. Structuring on the magnetic system HM13, the individual items can be fast positioned by the simple handling and can be fixed safely against slipping sideways.

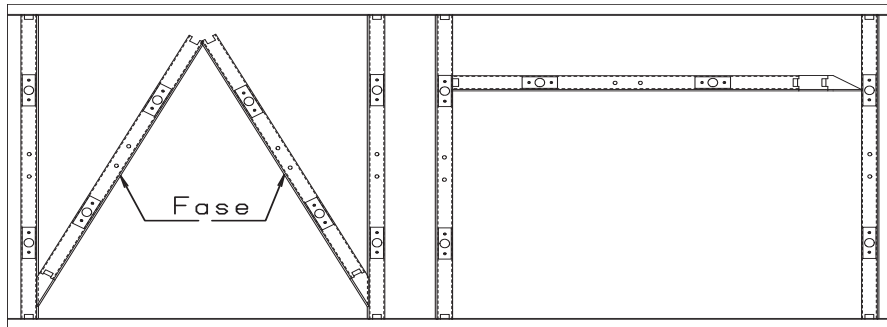
Into the length balancing items made out of PU, magnets are cast in, which fixes these when compressing the concrete.

By the recesses at the faces, the magnet can be stacked easily and on closest space in a magazine.

Dimensions, particularly for your production requirements, you receive on request.

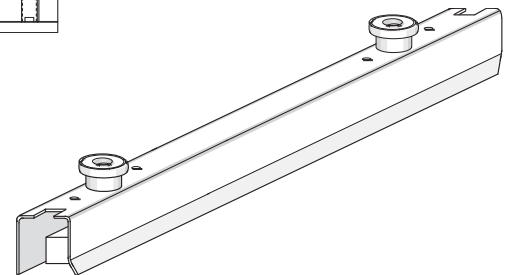


Structure possibilities on production-pallet



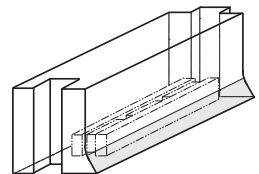
magnet-profile type HM13, with two magnet-elements

art.-no.	chamfers	length mm	weight kg	€/piece
	without			on request
	one side			
	both sides			



length balancing element, made out of PU, with magnet

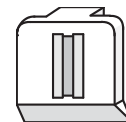
art.-no.	chamfers	length mm	weight kg	€/piece
3820	without	10		on request
3821	one side	10		
3822	both sides	10		
3824	without	20		
3825	one side	20		
3826	both sides	20		
3828	without	25		
3829	one side	25		
3830	both sides	25		
3832	without	40		
3833	one side	40		
3834	both sides	40		
3836	without	80		
3837	one side	80		
3838	both sides	80		
3840	without	160		
3841	one side	160		
3842	both sides	160		



end piece for fixing at steel formwork, made out of PU

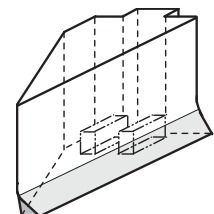
with magnet on gable-end, to forming exact edges

art.-no.	negativ chamfers gable-end	positiv chamfers lateral	weight kg	price €/piece
3800	with	left	0,140	25,56
3801	without	left	0,140	25,56
3802	with	right	0,140	25,56
3803	without	right	0,140	25,56
3804	with	without	0,140	25,56
3805	without	without	0,140	25,56



angle end piece for fixing at steel formwork, made out of PU, with magnet

art.-no.	three edge border	angle	weight kg	price €/piece
3810	negativ, on incline	left	0,580	30,68
3811	negativ, on incline	right	0,580	30,68
3812	positiv, on straight side	left	0,580	30,68
3813	positiv, on straight side	right	0,580	30,68
3814	without	left	0,580	30,68
3815	without	right	0,580	30,68



BGW-formwork system type HM13 – length balancing 1

for ceiling plates – and double wall production

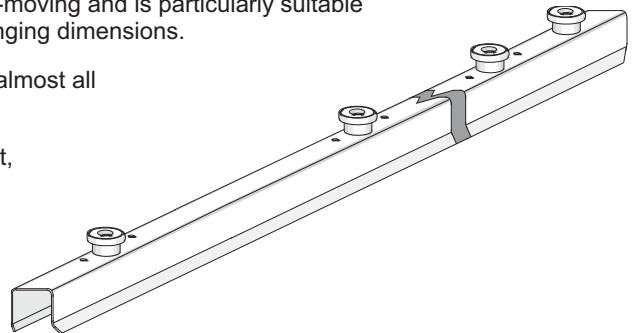
This variable formwork system is used as stoppers against side-moving and is particularly suitable for production of precast concrete elements with frequently changing dimensions.

By the length balancing elements available in different lengths, almost all precast elements dimensions can be produced.

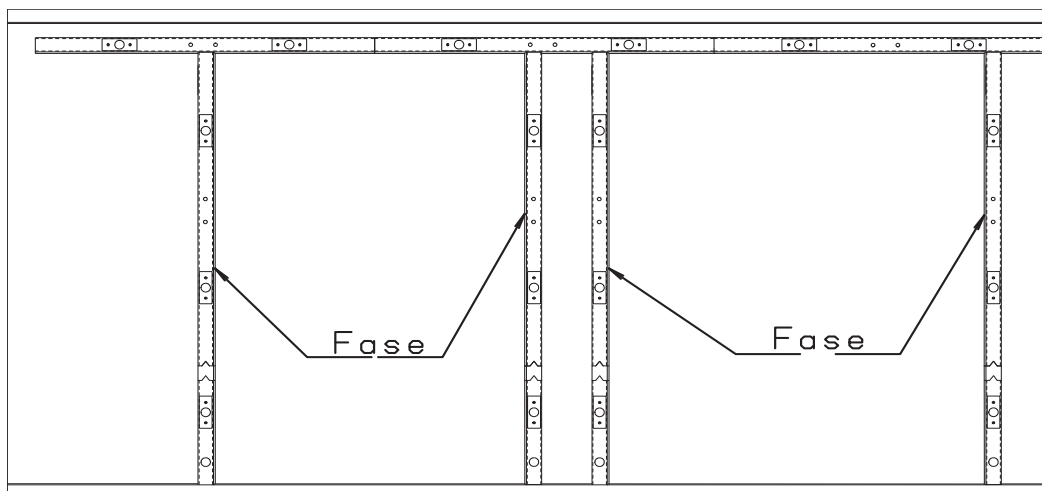
By the simple and control mechanism which can be handled fast, much time and also costs can be saved.

The profiles can be hang in at the shuttering with the control mechanism or blind button, that they will be easy to clean.

Dimensions, particularly for your production requirements, you receive on request.



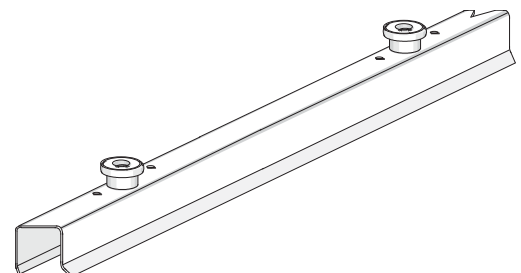
Structure possibilities on production-pallet.



profile type HM13 with two magnet elements

1 gable-end with chamfers 10x45° / 1 gable-end „mother“ or „father“

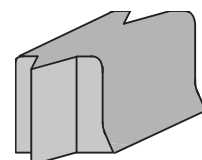
art.-no.	chamfers	gable-end	length mm	weight kg	price €/piece
3860	without	mother			on request
3861	one side	mother			
3862	both sides	mother			
3865	without	father			on request
3866	one side	father			
3867	both sides	father			



Length balancing element made out of PU, with and without magnet

1 gable-end „mother“ / 1 gable-end „father“

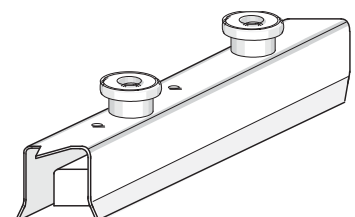
art.-no.	chamfers	magnet	length mm	weight kg	price €/piece
3870	without	without			on request
3871	one side	without			
3872	both sides	without			
3875	without	with			on request
3876	one side	with			
3877	both sides	with			



end piece type HM13, with one magnet element and 1 blind button

1 gable-end with chamfers 10x45° / 1 gable-end „mother“

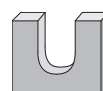
art.-no.	chamfers	length mm	weight kg	price €/piece
3880	without			on request
3881	one side			
3882	both sides			



mounting (to hang up the profile at the blind button)

art.-no. 3390

DM/piece



BGW-Magnet System Type HM13 - Magnetboxes

The magnet elements are including the proofed RELEASE SYSTEM HM13. The standard modules can be easily adapted to your formwork by welding or screwing.



HM13 Base Module



**HM13, Power
1300kg, 2 x M 12**



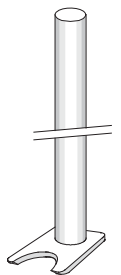
**32021-P
extra wide**



32021-Ecke

HM13-magnet elements with the RELEASE SYSTEM

art.-no.	power kg	length mm	widths mm	height mm	remarks	price €/piece
32021-110	350	110	60	70	Base Module 350 kg	
32021-210	900	210	60	70	Base Module 900 kg	
32021-350	1300	350	60	70	Base Module 1300 kg	
32022-40-280	900	280	60	40	2 x Thread M12 o. M16	
32022-70-350	1300	350	60	40	2 x Thread M12 o. M16	
32021-Ecke	900	210	60	70	For fixing in edges, height column 350 mm	
32021-Ecke2	1300	350	60	70	For fixing in edges, height column 350 mm	
32021-FBA	900	210	60	70	Column (h350mm)	
32021-P	900	210	60	70	Nailing plate d 5mm, h 150mm	



Release tool
length 1 meter

The basic modules can also be constructed to customers needs. Moreover, two magnets can be put side by side to get the double power. Prices for special versions on request.



32021-FBA - 900kg



32021-FBA - 1400kg



**Base Module 900 kg
with 90° plate**



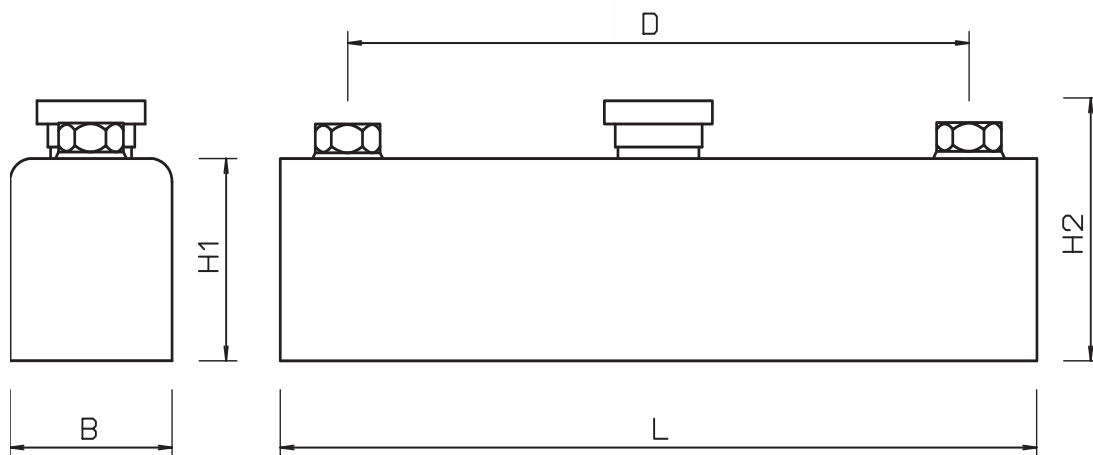
**Module for holding down
special profiles**

BGW-Magnetbox HM13 with thread

With this Magne Type HM13, wooden or steel formworks can be safely fixed to Steel moulds or Tables. The product is delivered with integrated high-prefomance magnets with forces from 800 to 2000 kg. Integrated threads (M16) can be used to adapt special formwork constructions to the Boxes. When the magnets are activated, steel springs are pulling the fromwork agaisnt the basic steel plate

Advantages / Overview:

- High Forces from 800 to 2000 kg
- Integrated automatic mechanism with steel springs
- Integrated threads M16 to adapt formwork
- Same magnet can be used for different purposes
- Adapters for your demand can be delivered on request



BGW-Magnetbox Type HM13 with two integrated Threads

Kraft kg	L mm	B mm	H mm	h _k mm	D mm	Price €/piece
800	210	60	70/60	90/80	160	
	280	60	40	60	230	
1100	350	60	70	90	300 oder 230	
1100	420	60	70	90	370	
1600	210	120	70	90	160	
	280	120	40	60	230	
2000	350	120	70	90	300	

Delivery with Screws possible

Boxes can be delivered with M12 threads and different sizes on demand

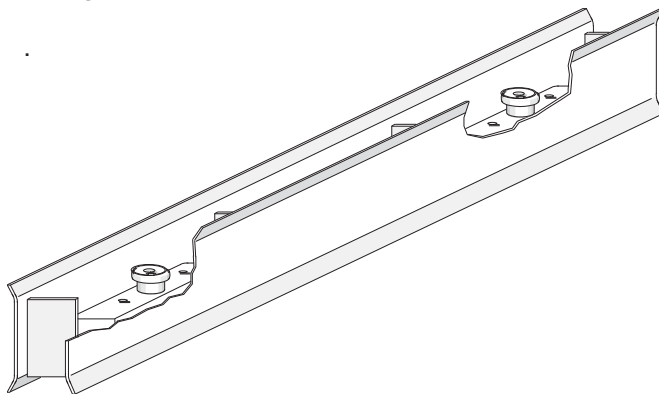
BGW-formwork system type HM13 - *Special equipment's*

This formwork system is characterised by a control mechanism, which, as with all other formwork systems of the HM13-series, is extremely favourably to handling and a little contamination susceptible. In order to achieve an optimal protection against the penetration of the liquid concrete between profile and formwork and around, the profiles were planed off both down, and above.

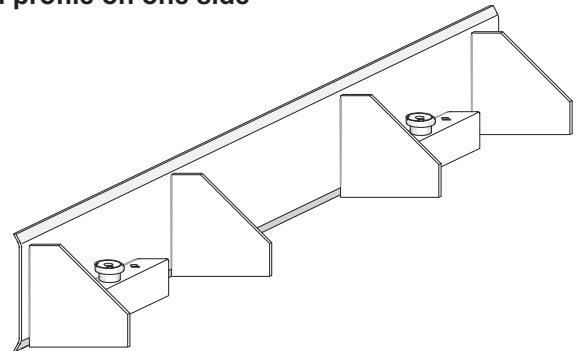
To ensure a rigidity as high as possible, additionally with tie bars strengthened. If necessary, the possibility exists of covering the magnet items to protect them against getting dirty. Available in length up to 4 meters.

Other lengthening and heights measurements, particularly for your production requirements, you receive on request.

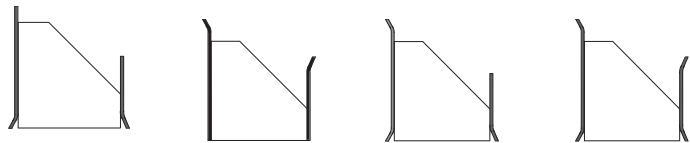
formwork system type HM13 with profile on both sides



with profile on one side

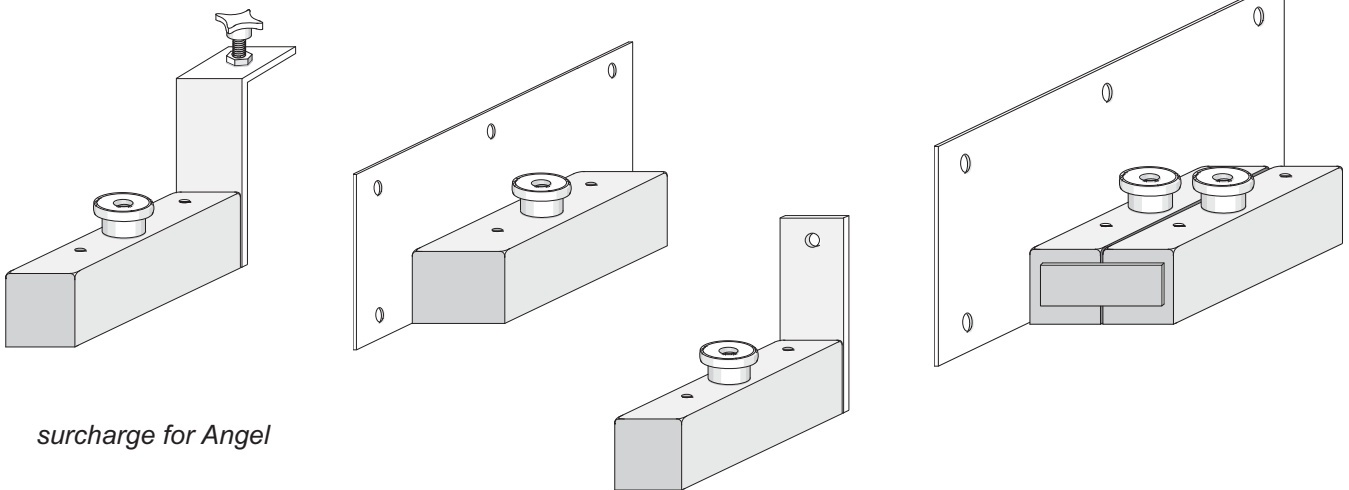


Versions (cross section):
(e.g. profiles with different heights)



BGW-formwork system type HM13 with welded-on angles

To a welded disk at long side or face of the magnet, timber panels can be screwed on firmly and surely. An angle with a fixing screw serves for the protection of the Formwork against high-swimming during compressing the concrete.



surcharge for Angel

Every prices on demand!

BGW-Formwork System Type HM13 - the adaptable Solution

Formwork systems with integrated magnets Type HM13 and automatic spring mechanism. This special version is similar to the usual formwork system for flooring or Double-Wall Production but has integrated threads M16 to adapt higher steel Formworks. As a result, the formwork can also be used for the production of solid concrete elements, i.ex. inside walls with 120mm or 150mm strength.

The formwork has the following specifications:

- integrated magnets with steel spring mechanism
- Number and force of magnets orientated to maximum casting height
- height basic formwork 70 – 90 mm
- basic formwork with one side chamfer or with no chamfer
- integrated threads for fixing height increasements
- planed bottom edges for best concrete finish
- length 500mm – 4000 mm

Basic Profile- height 80 mm

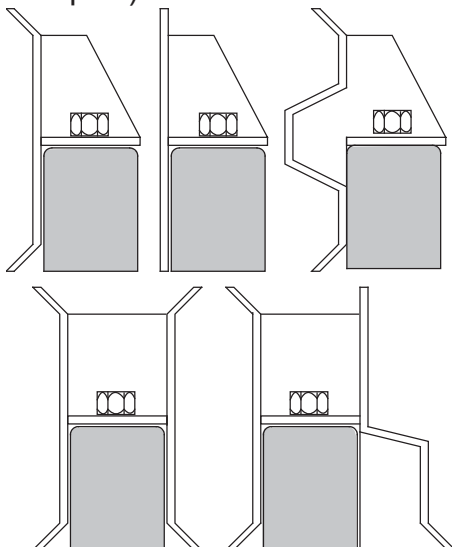
Art.-No.	Length mm	No. Magnets	Chamfer 10x45°	Price €/piece
3200-M16	500	2	Without	
3205-M16	500	2	One side	
3210-M16	1000	2	Without	
3215-M16	1000	2	One side	
3220-M16	1500	2	Without	
3225-M16	1500	2	One side	
3230-M16	2000	2	Without	
3235-M16	2000	2	One side	
3240-M16	2500	3	Without	
3245-M16	2500	3	One side	
3250-M16	3000	3	Without	
3255-M16	3000	3	One side	
3260-M16	3500	3	Without	
3265-M16	3500	3	One side	
3280-M16	4000	3	Without	
3285-M16	4000	3	One side	

Adapters for Basic Profile with 80 mm height

Please request you custom made solutions

- height 80 mm up to 300 mm
- with or without chamfer
- Material strength i.ex. 3,0-5,0 mm

Sapes (examples)



H 150mm
With chamfer
10mm45°
top+bottom



H 150mm
With nailing holes
to attach wood
pannels

BGW-basic formwork with wood skin

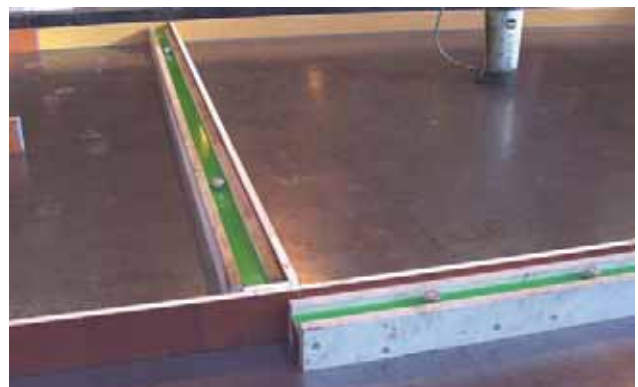
And integrated Magnetsystem HM13 – the comfortable solution

Formwork-system with wood skin to fix wood panels by nailing or screwing.

- for use where different formwork heights are needed
- change your whole formwork to another height within five minutes
- easy to place due to integrated magnetic system HM13
- available in different length up to four meters
- Very quick adaptable to different heights
- can be used on both sides at same time
- perfect use of your ground space
- length of one element up to 4 meters
- elements can be connected together

Elements can be easily connected with a connecting element.

wood skin
screwed = changing



pieces: on the next site

BGW-basic formwork with wood skin

And integrated Magnetsystem HM13 – the comfortable solution

basic formwork 100 mm

art.-no.	length m	no. magnets	price €/piece
3260-100-0250-1	0,25	1	
3260-100-0500-1	0,5	1	
3260-100-0500-2	0,5	2	
3260-100-1000-2	1,0	2	
3260-100-1500-2	1,5	2	
3260-100-2000-2	2,0	2	
3260-100-2500-2	2,5	2	
3260-100-2500-3	2,5	3	
3260-100-3000-3	3,0	3	
3260-100-3500-3	3,5	3	
3260-100-4000-3	4,0	3	



basic formwork 150 mm

art.-no.	length m	no. magnets	price €/piece
3260-150-0250-1	0,25	1	
3260-150-0500-1	0,5	1	
3260-150-0500-2	0,5	2	
3260-150-1000-2	1,0	2	
3260-150-1500-2	1,5	2	
3260-150-2000-2	2,0	2	
3260-150-2500-2	2,5	2	
3260-150-2500-3	2,5	3	
3260-150-3000-3	3,0	3	
3260-150-3500-3	3,5	3	
3260-150-4000-3			



basic formwork 200 mm

art.-no.	length m	no. magnets	price €/piece
3260-200-0500-1	0,5	1	
3260-200-0500-2	0,5	2	
3260-200-1000-2	1,0	2	
3260-200-1500-2	1,5	2	
3260-200-2000-2	2,0	2	
3260-200-2500-2	2,5	2	
3260-200-2500-3	2,5	3	
3260-200-3000-3	3,0	3	
3260-200-3500-3	3,5	3	
3260-200-4000-3	4,0	3	

standard width basic formwork: 120 mm (z.B. + 20 mm wood pannel each site)

standard magnet: ca. 900 kg ahesive force

surcharge on ahesive force 1300 kg: 20 € / piece

aberrant plating height on request

BGW-magnetic holder pocket former

This device, for leaving blank break-throughs in precast concrete parts, consists of a conical steel housing with integrated magnetic tension mechanism, which is to be operated simply and surely with the foot.

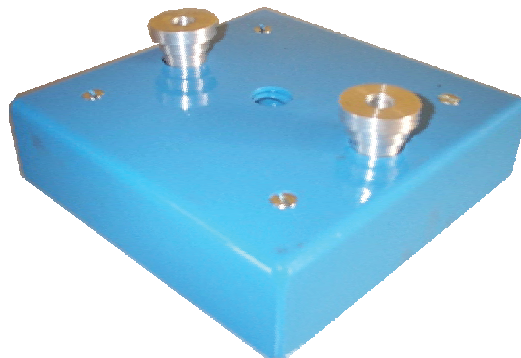
The downward open recess body indicates an even road-contact area and in the tension mechanism positively on the shuttering is pulled whereby the penetration of liquid concrete and the education are thus prevented from unpleasant edges also out-standing noses.

With the help of the suitable replacement lever the system can be remove again easily from the shuttering and by the conical form, with appropriate flow characteristics of the concrete, after which concreting and compressing remove, problem-free. The simple and fast handling increases besides the industrial safety.

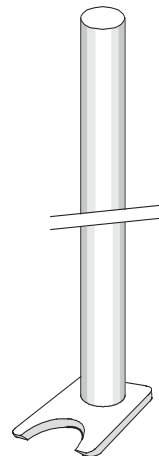
By the separate arrangement of tension mechanism and handle-knob, and tension mechanism and housing, the forces acting on the formwork and on the magnet during the concrete process are absorbed. The built-in elements are placed in a save position, so that the formwork-system is less sensitive against soiling. Note: Recess bodies before first using into oil!

This system is usable by the steel housing pollution free (polystyrene, plastic) and again and again. With defect the old housing, by remove from 3 screws, can be easily exchanged.

Deviating forms (e.g. upward tapered) and dimensions receive request.

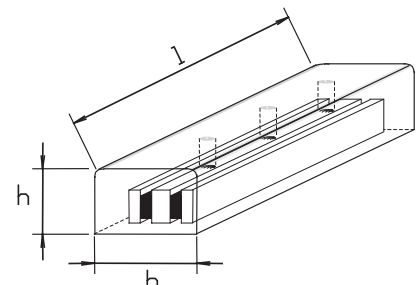


art.-no.	width mm	length mm	height mm	weight ca. kg	price €/piece
3400	100	100	70	1,4	
3402	150	150	70	2,3	
3404	200	200	70	2,8	
3406	250	250	70	3,4	
3408	300	300	70	4,0	
3410	350	350	70	4,8	
3412	400	400	70	5,6	
3414	100	150	70	2,1	
3416	150	200	70	2,5	
3418	200	250	70	3,1	
3420	250	300	70	3,7	



magnetic holder type HM13

art.-no.	name	weight	€/piece
3350	magnetic holder type HM13	1,00 kg	



supply, etc.

art.-no.	name	€/piece
3360	lever	
3365	handle knob – antimagnetic	
3373	tension element	
56290	fixing screw M 8	

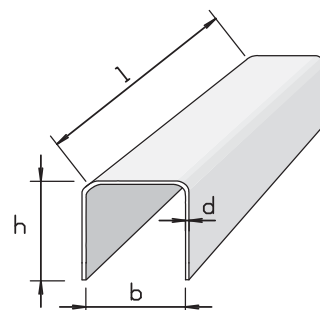


BGW-U-profiles for ceiling plates- and double wall production

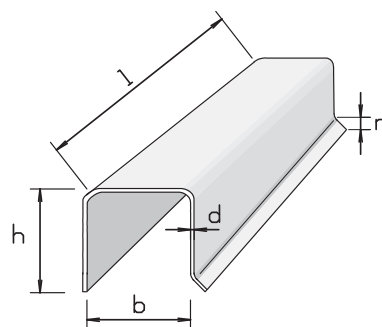
Available in different models, according to the needed field of application. You can also get profiles at special heights on request. These consists of two parts, which are unbreakable welded together.

U-profile

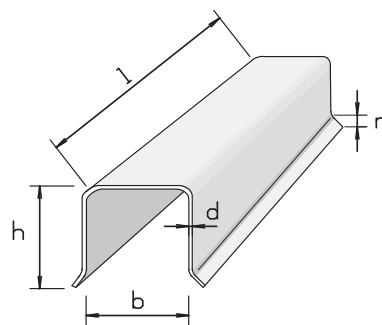
art.-no.	chamfers r 10x45°	weight kg/m	breadth inside b mm	height h mm	metal thickness d mm 3	for magnet HM3-	price €/piece
3502	none	4,71	32 + 0,5	60	4	32-140-2 32-250-2	on request
3504	none	6,28			3		
3506	one side	4,71			4 3		
3508	one side	6,28			4 3		
3510	both side	4,71			4		
3512	both side	6,28	3				
3514	none	4,71	4 3		40-140-2 40-250-2		
3516	none	6,28	4 3				
3518	one side	4,71	4				
3520	one side	6,28	3				
3522	both side	4,71	4 3				
3524	both side	6,28	4 3		50-140-3 50-250-3		
3526	none	4,71	4				
3528	none	6,28	3				
3530	one side	4,71	4 3				
3534	one side	6,28	4 3				
3536	both side	4,71	4		54-140-3 54-250-3 54-140-4 54-250-4		
3538	both side	6,28	3				
3540	none	4,71	4 3				
3542	none	6,28	4 3				
3544	one side	4,71	4				
3546	one side	6,28	3	32-140-2 32-250-2			
3548	both side	4,71	4 3				
3550	both side	6,28	4 3				
3552	none	4,71	4				
3554	none	6,28	3				
3556	one side	4,71	4 3	40-140-2 40-250-2			
3558	one side	6,28	4 3				
3560	both side	4,71	4				
3562	both side	6,28	3				
3564	none	4,71	4 3				
3566	none	6,28	4 3	50-140-3 50-250-3			
3568	one side	4,71	4				
3570	one side	6,28	3				
3572	both side	4,71	4 3				
3574	both side	6,28	4 3				
3576	none	4,71	4	54-140-3 54-250-3 54-140-4 54-250-4			
3578	none	6,28	3				
3580	one side	4,71	4 3				
3582	one side	6,28	4 3				
3584	both side	4,71	4				
3586	both side	6,28	3	32-140-2 32-250-2			
3588	none	4,71	4 3				
3590	none	6,28	4 3				
3592	one side	4,71	4				
3594	one side	6,28	3				
3596	both side	4,71	4 3	40-140-2 40-250-2			
3598	both side	6,28	4				
3600	none	4,71					
3602	none	6,28					
3604	one side	4,71					
3606	one side	6,28		50-140-3 50-250-3			
3608	both side	4,71					
3610	both side	6,28					
3612	none	4,71					
3614	none	6,28					
3616	one side	4,71	32 + 0,5	70	40-140-2 40-250-2		
3618	one side	6,28					
3620	both side	4,71					
3622	both side	6,28					
3624	none	4,71					
3626	none	6,28	40 + 0,5		50-140-3 50-250-3		
3628	one side	4,71					
3630	one side	6,28					
3632	both side	4,71					
3634	both side	6,28					
3636	none	4,71	54 + 0,5		54-140-3 54-250-3 54-140-4 54-250-4		
3638	none	6,28					
3640	one side	4,71					
3642	one side	6,28					
3644	both side	4,71					
3646	both side	6,28					



none chamfers



one side chamfers



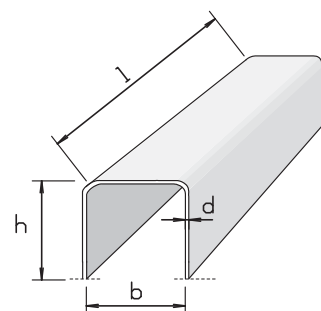
both side chamfers

BGW-U-profiles for ceiling plates- and double wall production

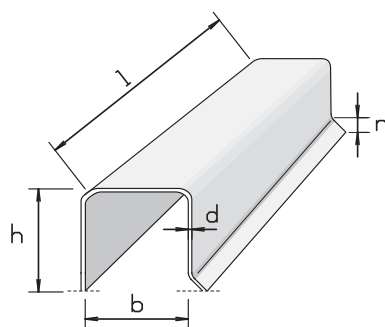
Available in different models, according to the needed field of application. The advantage of the planed model is, that no concrete can get into the profile. You can also get profiles at special heights on request. These consists of two parts, which are unbreakable welded together.

U-profile, planed

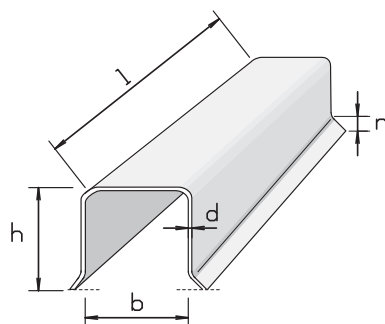
art.-no.	chamfers r 10x45°	weight kg/m	breadth inside b mm	height h mm	metal thickness d mm 3	for magnet HM3-	price €/piece
3502G	none	4,71	32 + 0,5	60	4	32-140-2 32-250-2	on request
3504G	none	6,28			3		
3506G	one side	4,71			4 3		
3508G	one side	6,28			4 3		
3510G	both sides	4,71			4		
3512G	both sides	6,28	3				
3514G	none	4,71	4 3		40-140-2 40-250-2		
3516G	none	6,28	4 3				
3518G	one side	4,71	4				
3520G	one side	6,28	3				
3522G	both sides	4,71	4 3				
3524G	both sides	6,28	4 3		50-140-3 50-250-3		
3526G	none	4,71	4				
3528G	none	6,28	3				
3530G	one side	4,71	4 3				
3534G	one side	6,28	4 3				
3536G	both sides	4,71	4		54-140-3 54-250-3 54-140-4 54-250-4		
3538G	both sides	6,28	3				
3540G	none	4,71	4 3				
3542G	none	6,28	4 3				
3544G	one side	4,71	4				
3546G	one side	6,28	3	32-140-2 32-250-2			
3548G	both sides	4,71	4 3				
3550G	both sides	6,28	4 3				
3552G	none	4,71	4				
3554G	none	6,28	3				
3556G	one side	4,71	4 3	40-140-2 40-250-2			
3558G	one side	6,28	4 3				
3560G	both sides	4,71	4				
3562G	both sides	6,28	3				
3564G	none	4,71	4 3				
3566G	none	6,28	4 3	40-140-2 40-250-2			
3568G	one side	4,71	4				
3570G	one side	6,28	3				
3572G	both sides	4,71	4 3				
3574G	both sides	6,28	4 3				
3576G	none	4,71	4	50-140-3 50-250-3			
3578G	none	6,28	3				
3580G	one side	4,71	4 3				
3582G	one side	6,28	4 3				
3584G	both sides	4,71	4				
3586G	both sides	6,28	3	54-140-3 54-250-3 54-140-4 54-250-4			
3588G	none	4,71	4 3				
3590G	none	6,28	4 3				
3592G	one side	4,71	4				
3594G	one side	6,28	3				
3596G	both sides	4,71	4 3	32-140-2 32-250-2			
3598G	both sides	6,28	4				
3600G	none	4,71					
3602G	none	6,28					
3604G	one side	4,71					
3606G	one side	6,28		40-140-2 40-250-2			
3608G	both sides	4,71					
3610G	both sides	6,28					
3612G	none	4,71					
3614G	none	6,28					
3616G	one side	4,71		50-140-3 50-250-3			
3618G	one side	6,28					
3620G	both sides	4,71					
3622G	both sides	6,28					
3624G	none	4,71					
3626G	none	6,28		54-140-3 54-250-3 54-140-4 54-250-4			
3628G	one side	4,71					
3630G	one side	6,28					
3632G	both sides	4,71					
3634G	both sides	6,28					
3636G	none	4,71		32-140-2 32-250-2			
3638G	none	6,28					
3640G	one side	4,71					
3642G	one side	6,28					
3644G	both sides	4,71					
3646G	both sides	6,28					



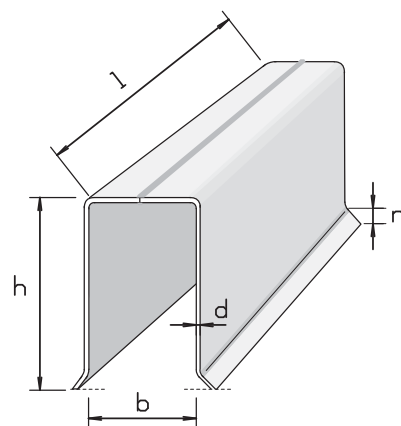
none chamfers



one side chamfers



both side chamfers



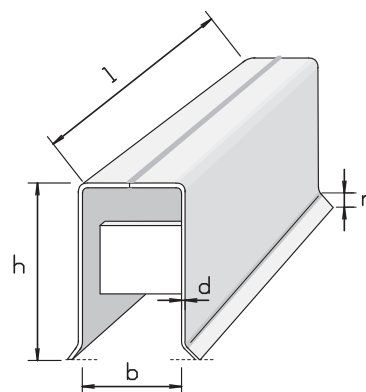
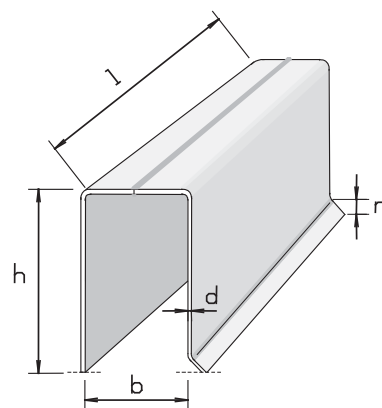
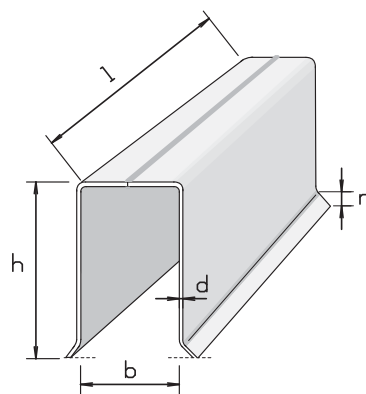
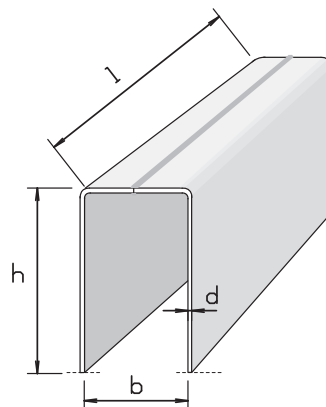
special height

BGW-U-profiles – special heights - for massif wall production

Available in different models, according to the needed field of application. The advantage of the planed model is, that no concrete can get into the profile. You can also get profiles at special heights on request. These consist of two parts, which are unbreakable welded together.

U-profile, planed

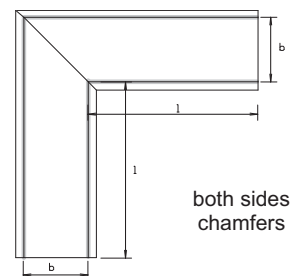
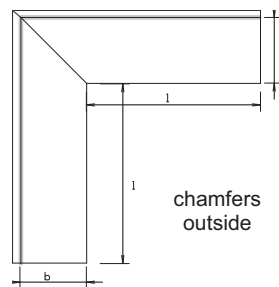
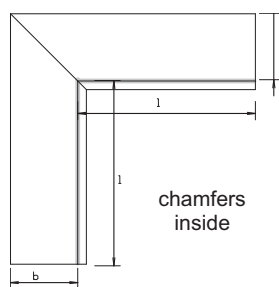
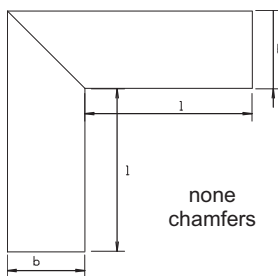
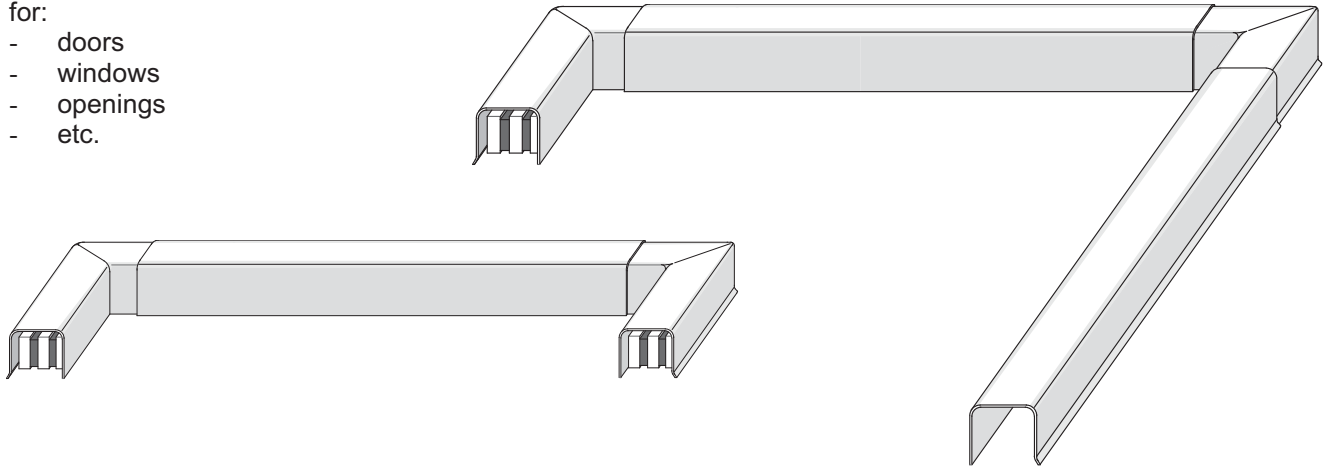
art.-no.	chamfers r 10x45°	breadth inside b mm	height h mm	metal thickness d mm	for magnet HM3-	price €/piece
	none	32 + 0,5	100		32-140-2 32-250-2	on request
	none			4		
	one side			3		
	one side			4		
	both side			4 3		
	both side			4		
	none	40 + 0,5		3	40-140-2 40-250-2	
	none			4		
	one side			4 3		
	one side			4		
	both side			3		
	both side			4		
	none	50 + 0,5		4 3	50-140-3 50-250-3	
	none					
	one side					
	one side					
	both side					
	both side					
	none	54 + 0,5			54-140-3 54-250-3 54-140-4 54-250-4	
	none			4		
	one side			3		
	one side			3		
	both side			3		
	both side			4		
	none	32 + 0,5	150	3	32-140-2 32-250-2	
	none			3		
	one side			3		
	one side			4		
	both side			3		
	both side			3		
	none	40 + 0,5		3	40-140-2 40-250-2	
	none			4		
	one side			3		
	one side			3		
	both side			3		
	both side			3		
	none	50 + 0,5			50-140-3 50-250-3	
	none					
	one side					
	one side					
	both side					
	both side					
	none	54 + 0,5			54-140-3 54-250-3 54-140-4 54-250-4	
	none			4		
	one side			3		
	one side			3		
	both side			3		
	both side			4		
	none	32 + 0,5	200	3	32-140-2 32-250-2	
	none			3		
	one side			3		
	one side			4		
	both side			3		
	both side			3		
	none	40 + 0,5		3	40-140-2 40-250-2	
	none			4		
	one side			3		
	one side			3		
	both side			3		
	both side			3		
	none	50 + 0,5			50-140-3 50-250-3	
	none					
	one side					
	one side					
	both side					
	both side					
	none	54 + 0,5			54-140-3 54-250-3 54-140-4 54-250-4	
	none			4		
	one side			3		
	one side			4		
	both side			3		
	both side			4		



corner 90° fitting to u-profiles – Height 60 mm

for:

- doors
- windows
- openings
- etc.



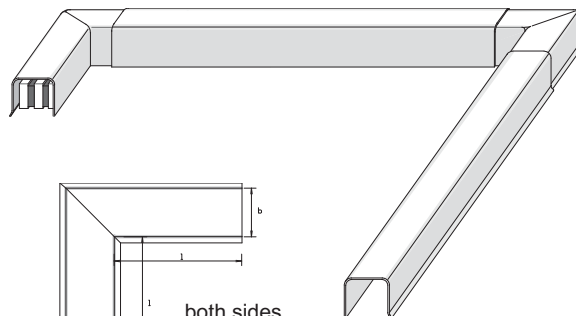
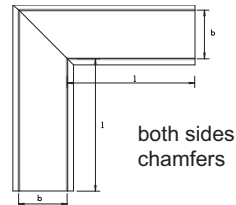
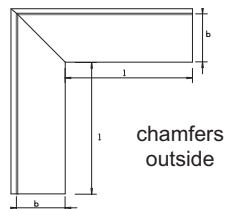
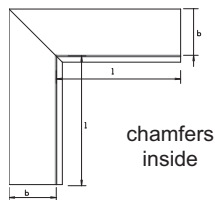
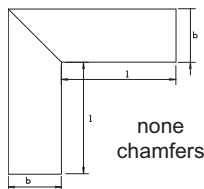
art.-no.	chamfers 10 x 45°	side length l mm	width inside b mm	height h mm	metal thickness d mm 3	for magnet HM3-	price €/piece
35000	none	150	32 + 0,5	60	4	32-140-2 32-250-2	on request
35001	none				3		
35002	inside				4		
35003	inside				3		
35004	outside				4		
35005	outside				3		
35006	both sides				4 3		
35007	both sides	4	40 + 0,5		3		
35008	none	4			40-140-2 40-250-2		
35009	none	3					
35010	inside	4					
35011	inside	3					
35012	outside	4 3					
35013	outside	4					
35014	both sides	4	50 + 0,5			3	
35015	both sides	4			50-140-3 50-250-3		
35016	none	3					
35017	none	4					
35018	inside	3					
35019	inside	4 3					
35020	outside	4					
35021	outside	3	150			54 + 0,5	
35022	both sides	3			54-140-3 54-250-3 54-140-4 54-250-4		
35023	both sides	4					
35024	none	3					
35025	none	4					
35026	inside	3 4					
35027	inside						
35028	outside						
35029	outside						
35030	both sides						
35031	both sides						

Heights 65 and 70 mm see at side 2! Different sizes you get on request.

corner 90° fitting to u-profiles – Height 65 und 70 mm

for:

- doors
- windows
- openings
- etc.



art.-no.	chamfers 10 x 45°	side length l mm	width inside b mm	height h mm	metal thickness d mm	for magnet HM3-	price €/piece
35032	none	150	32 + 0,5	65	3	32-140-2 32-250-2	on request
35033	none				4		
35034	inside				3		
35035	inside				4		
35036	outside				3		
35037	outside				4		
35038	both sides				3 4 3		
35039	both sides				4		
35040	none	150	40 + 0,5		3	40-140-2 40-250-2	
35041	none				4		
35042	inside				3		
35043	inside				4		
35044	outside				3 4 3		
35045	outside				4		
35046	both sides				3		
35047	both sides				4		
35048	none	150	50 + 0,5		3	50-140-3 50-250-3	
35049	none				4		
35050	inside				3 4 3		
35051	inside				4		
35052	outside				3		
35053	outside				4		
35054	both sides				3		
35055	both sides				4		
35056	none	150	54 + 0,5		3 4 3	54-140-3 54-250-3 54-140-4 54-250-4	
35057	none				4		
35058	inside				3		
35059	inside				4		
35060	outside				3		
35061	outside				4		
35062	both sides			3 4 3			
35063	both sides			4			
35064	none	150	32 + 0,5	70	3	32-140-2 32-250-2	
35065	none				4		
35066	inside				3		
35067	inside				4		
35068	outside				3 4 3		
35069	outside				4		
35070	both sides				3		
35071	both sides				4		
35072	none	150	40 + 0,5		3	40-140-2 40-250-2	
35073	none				4		
35074	inside				3 4 3		
35075	inside				4		
35076	outside				3		
35077	outside				4		
35078	both sides				3		
35079	both sides				4		
35080	none	150	50 + 0,5		3 4	50-140-3 50-250-3	
35081	none						
35082	inside						
35083	inside						
35084	outside						
35085	outside						
35086	both sides						
35087	both sides						
35088	none	150	54 + 0,5			54-140-3 54-250-3 54-140-4 54-250-4	
35089	none						
35090	inside						
35091	inside						
35092	outside						
35093	outside						
35094	both sides						
35095	both sides						

BGW-HM16 – for fixing cast-in channels

Magnetic system for fixing C-shaped anchor channels to steel formworks with hammer head bolting device for the safe connection of the anchor rail and the magnetic system.

The fixing system consists of a magnet. The magnetic material is neodymium. The magnet material is cast in plastic, so that the magnetic system is protected and inadvertent adhering in the channel is avoided.

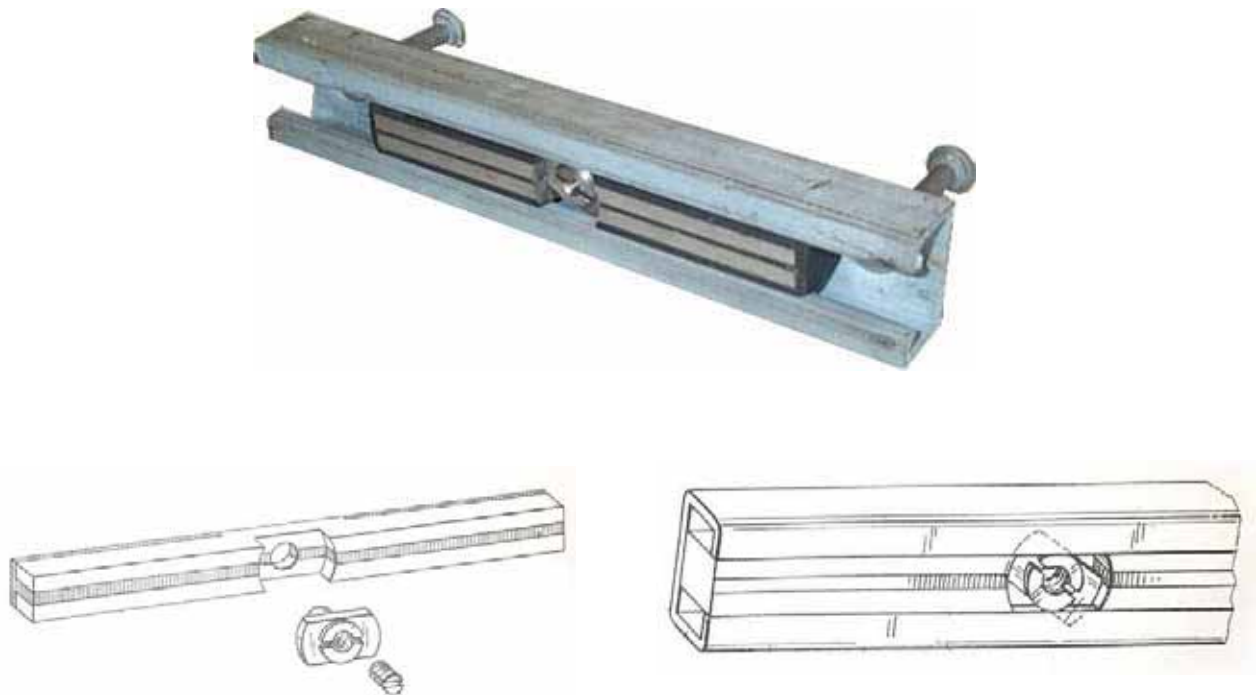
For fixing the channel to the steel-formwork, the magnet is inserted into the channel and is fixed with a screwdriver.

It is important that before installation into the channel, the magnet is coated with a thick layer of parting oil, and that the bolt and the screw are protected with a thick layer of fat (against concrete).

The magnet border has to be protected on the entire length, inclusive anchor channel, with a thin adhesive strip, e.g. packing tape to protect it against concrete.

After removing the precasted element from the formwork, unlock the magnet, let the magnet adhere on a flat iron plate and put it out of the anchor channel.

Keep the magnetic system clean!



art.-no.	type	length	price €/piece
HM16 28/15K	28/15K	200 mm	
HM16 38/17K	38/17K	200 mm	
HM16 40/25K	40/25K	200 mm	
HM16 50/30K	50/30K	200 mm	
HM16 53/34K	53/34K	200 mm	
HM16 72/48K	72/48K	200 mm	
HM16 40/22W	40/22W	200 mm	
HM16 50/30W	50/30W	200 mm	
HM16 53/34W	53/34W	200 mm	
HM16 74/48W	74/48W	200 mm	

BGW-Magnetic clamp Typ HM18

Very light and ergonomic formed magnet out of the solid material PU.

The BGW magnetic clamp HM 18 qualifies especially for fixing the form work out of wood and steel during the production of the concrete components as well as for the in-situ concrete form work. Recesses for the windows and for the doors out of wood or steel can be fixed safely for material move away. With the help of the nail holes in the front of the magnet you can screw the wooden form work tight resp. you can nail it and fix it square to the ground of the form work. The integrated handle allows a safe and easy positioning and removing of the magnets.

The used plastic PU is signalized by very slim weight, smooth surface and doesn't swell out during the concreting.

Application advice: magnetic elements should be inlayed in special oil for the form works before its first. Furthermore you can increase the life time by cleaning it after every use and treating special oil for the form works after the event of the concreting.

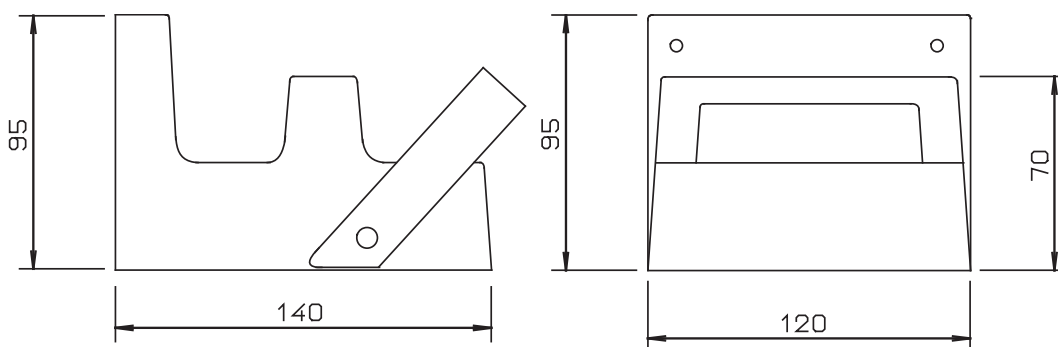
Advantages:

- very slim weight ca. 1,6 kg
- different adhesive force
- robust magnet body
- no danger of sharp edges
- easy handling
- only bottom is magnetic
- high industrial safety
- low maintenance
- form consistent
- poor adhesion, plain surface



art.-no.	adhesive force kg	dimension/mm				price € / piece
		H1	H2	B	L	
HM18-1-100	100	95	40	120	140	
HM18-1-150	150	95	40	120	140	
HM18-1-300	300	95	40	120	140	

Special sizes on demand, for example H1=135 mm – with a minimum purchase of 20 pieces.



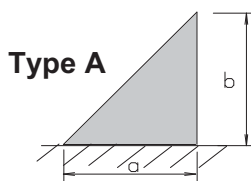
BGW-Magnetic Strips

BGW-Triangular shape/ -Trapezional shape

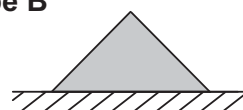
BGW-Magnetic Strips are available with triangular and trapezional shape. Made out of Pulyurethane or Steel, their flexibility and magnetic force can be adjusted to your special needs.



Different versions:



Type B



Triangular shape, Material Plastic (PU)

Art.Nr.	Type	a mm	b mm	c mm	Price €/mtr.
54007K-A	A	7	7	10	On request!
54007K-B	B	7	7	10	
54010K-A	A	10	10	15	
54010K-B	B	10	10	15	
54015K-A	A	15	15	20	
54015K-B	B	15	15	20	
54020K-A	A	20	20	28	
54020K-B	B	20	20	28	
54025K-A	A	25	25	35	
54025K-B	B	25	25	35	

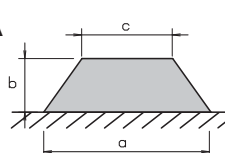
Triangular shape, Material Steel

Art.Nr.	Type	a mm	b mm	c mm	Price €/mtr.
54007S-A	A	7	7	10	On request!
54007S-B	B	7	7	10	
54010S-A	A	10	10	15	
54010S-B	B	10	10	15	
54015S-A	A	15	15	20	
54015S-B	B	15	15	20	
54020S-A	A	20	20	28	
54020S-B	B	20	20	28	
54025S-A	A	25	25	35	
54025S-B	B	25	25	35	

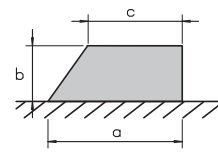
Other dimensions on request!

Different versions:

Type A



Type B



Trapezional shape, Material Plastic (PU)

Art.Nr.	Type	a mm	b mm	c mm	Price €/mtr.
541151010K-A	A	15	10	10	On request!
541151010K-B	B	15	10	10	
541201010K-A	A	20	10	10	
541201010K-B	B	20	10	10	
541201510K-A	A	20	15	10	
541201510K-B	B	20	15	10	
541302010K-A	A	30	20	10	
541302010K-B	B	30	20	10	
541302020K-A	A	30	20	20	
541302020K-B	B	30	20	20	
541402020K-A	A	40	20	20	
541402020K-B	B	40	20	20	
541402030K-A	A	40	20	30	
541402030K-B	B	40	20	30	
541403030K-A	A	40	30	30	
541403030K-B	B	40	30	30	

Trapezional shape, Material Steel

Art.Nr.	Type	a mm	b mm	c mm	Price €/mtr.
541151010S-A	A	15	10	10	On request!
541151010S-B	B	15	10	10	
541201010S-A	A	20	10	10	
541201010S-B	B	20	10	10	
541201510S-A	A	20	15	10	
541201510S-B	B	20	15	10	
541302010S-A	A	30	20	10	
541302010S-B	B	30	20	10	
541302020S-A	A	30	20	20	
541302020S-B	B	30	20	20	
541402020S-A	A	40	20	20	
541402020S-B	B	40	20	20	
541402030S-A	A	40	20	30	
541402030S-B	B	40	20	30	
541403030S-A	A	40	30	30	
541403030S-B	B	40	30	30	

Other dimensions on request!

BGW-magnetic systems

* Magnet < Greek > scarce

The columns have to be fixed solidly with the magnetic system, to prevent bends and breaks of the column at the thread pin.

Error:

space between magnetic holder system and the form table, by mean of sand- and concrete-rest

magnetic system can't be removed from the steel formwork

Damaged pole sheets

countermeasure:

- Cleaning of the adhesion side and the form table

- Tighten the tension anchors with a spanner Ø 17 mm, then remove magnet

- Smaller damages of the pole sheets can be repaired with sandpaper

To prevent that concrete adheres at the magnetic system it is recommended to spray the upper side of the systems with separate preparation.

Please observe at handling with magnets for an sufficient distance to each other. By mean of the high adhesion, the magnetic systems can only hardly separated from each other, as soon as their adhesion side comes together.

By mean of the high adhesion power, it exists **injury danger** during the handling!

Near by electronic equipment and measuring instruments can, by mean of the high field strength, be de-calibrated or damaged. Magnetic systems have to be kept in a save distance (2 m) especially to computers, TV screens and all magnetic data carriers (for example discs, credit cards, audio- and videotapes), as well as **cardiac peacemaker**.

At more questions about magnetic holder systems, we are on your disposal.

Price- and construction changes reserved. All current prices are without value added tax.